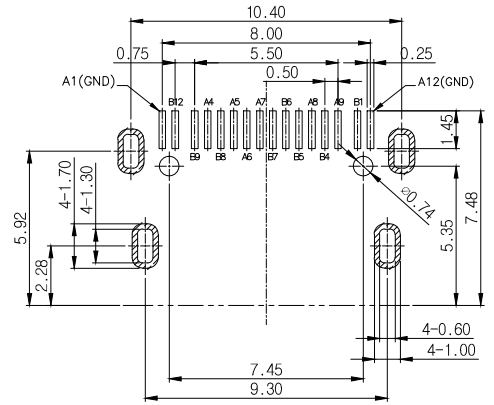
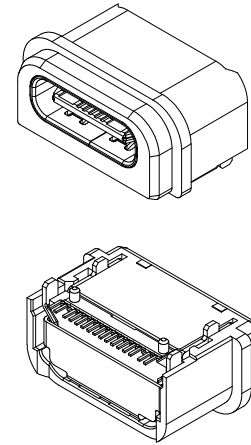
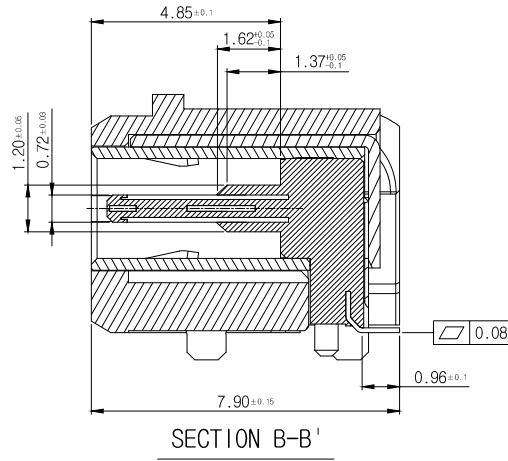
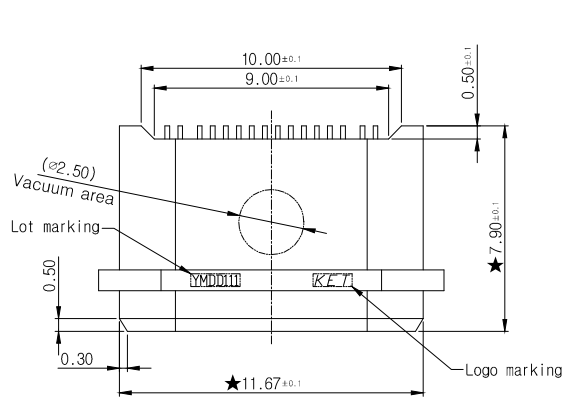


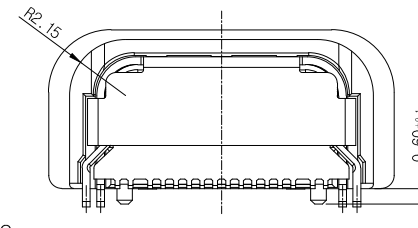
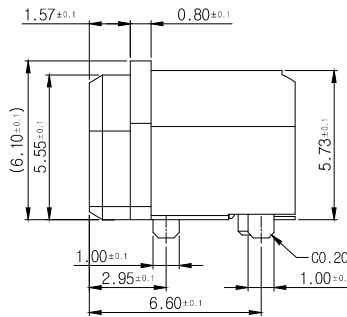
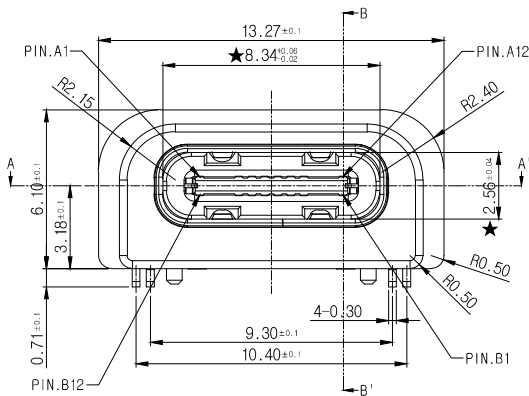
PART NO.
K500172-16

CUSTOMER DRAWING

(DIMENSIONS IN MM)



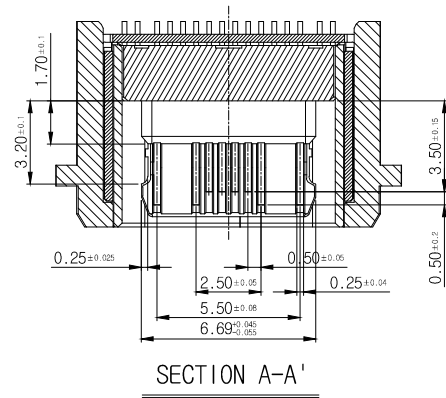
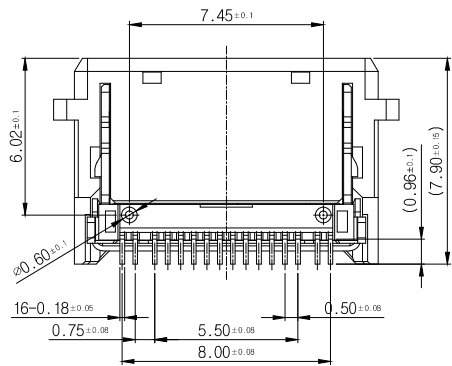
Recommend PCB Layout
(General Tolerance ±0.05)



-NOTES-

1. PLATING
 - 1) CONTACT PLATING (selective plating)
 - Contact Area : Au 0.05um Min, over Pd-Ni 0.75um Min, over Ni 2.0~5.0um.
 - Lead Area : Au 0.03um Min, over Ni 2.0~5.0um.
 - 2) SHELL, MID PLATE : Ni 1.0~5.0um.
2. () This indication is reference dimension (for understanding)
3. ★ This indication will be managed by critical control dimension (C.T.F ENTRY)

韓國電子工業株式會社
出
2019.04.24
圖
改
發
可
ISSUE MARK



SECTION A-A'

7	BRACKET	Stainless Steel	NOTE. 1	-	1
6	SHELL	Stainless Steel	NOTE. 1	-	1
5	MID PLATE	Stainless Steel	NOTE. 1	-	1
4	CONTACT-B	Corson Alloy	NOTE. 1	-	1
3	CONTACT-A	Corson Alloy	NOTE. 1	-	1
2	COVER	LCP	COLOR : BLACK / UL94V-0	-	1
1	HOUSING	LCP	COLOR : BLACK / UL94V-0	-	1
No	PART NAME	MATERIAL	FINISH	ETC	Q'ty

		MATERIAL -		KOREA ELECTRIC TERMINAL CO., LTD.	
		FINISH NOTE.1			
		WIRE RANGE		CLASS USB TYPE-C SOCKET	
		INSULATION		TYPE USB 2.0 on board type	
△	조도 백프	K/JY	C/YJ	KHG	19.04.24
LTR	REVISION RECORD	DR.	CHK.	APP.	DATE
DR.	JY.KIM	11/20/2018	CHK.		
CHK.			APP.		
		TOLERANCE EXCEPT AS NOTED		± 0.1	
		SCALE		N/S	
		PART NO.		K500172-16	
		PART NAME		USB C SOCKET 16P 3.18H	
				1/1	