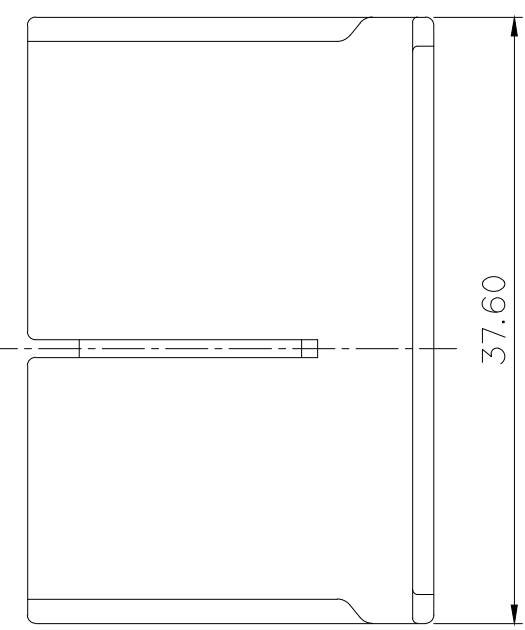
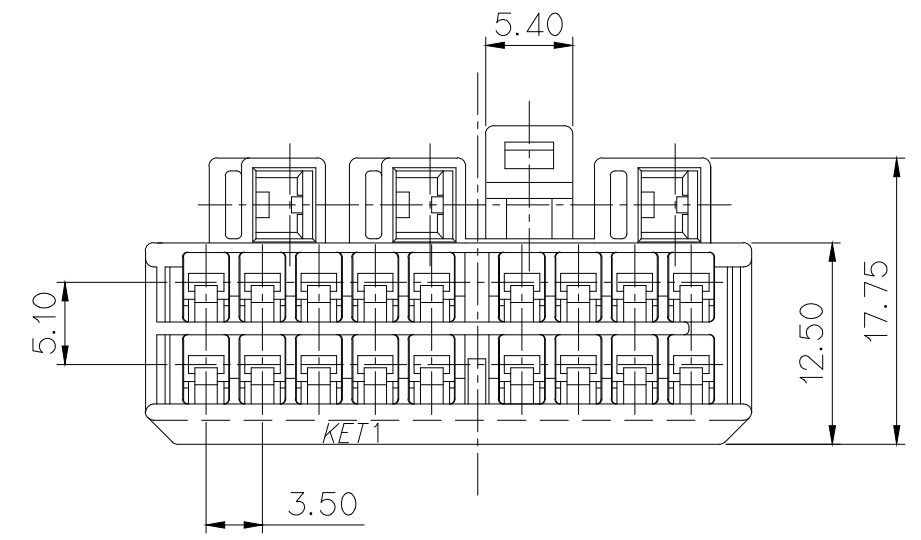
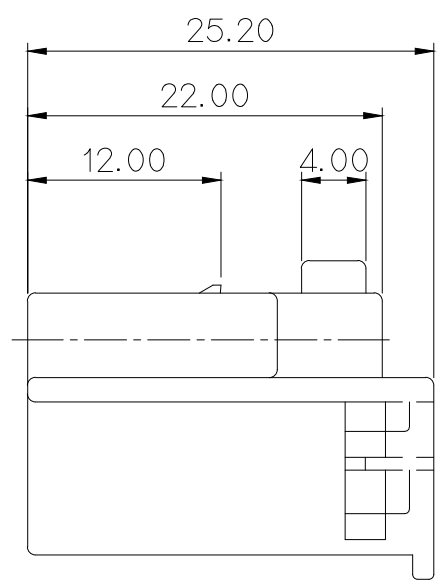
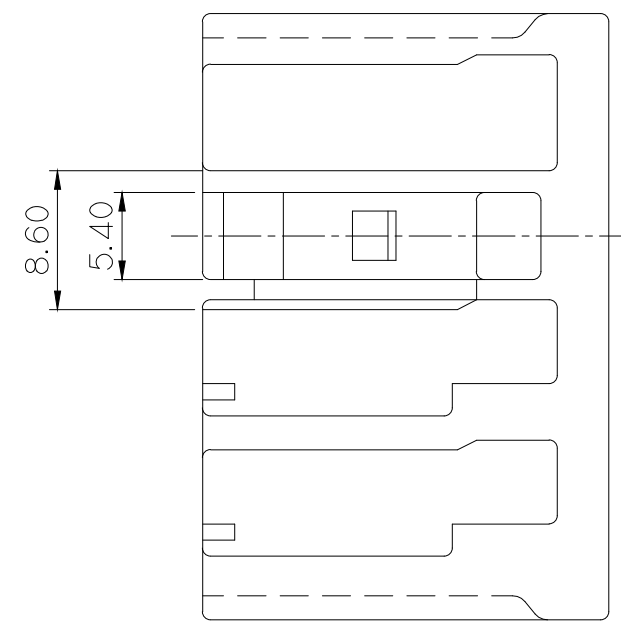
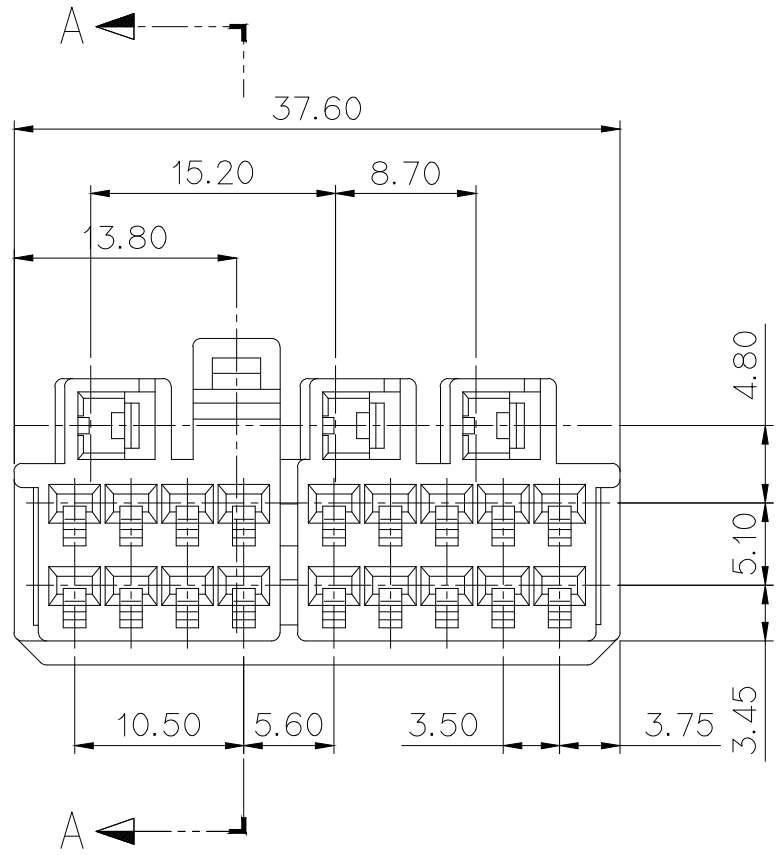


SECTION A-A



GENERAL TOLERANCE (HOUSING)							USED ON
10MAX	50MAX	100MAX	250MAX	250VR	ANGLE	ECCENT	
±0.2	±0.3	±0.55	±0.95	±1.4	±30'	0.1	

NOTE

- MUST BE FREE OF BURR, WELDLINE AND IMPERFECTION THAT AFFECT FUNCTION.
- APPLICABLE TERMINAL : PA=ST730186, ST730192, ST730383
 △ 적용 TERMINAL : SDL(070)=ST730497, ST730498, ST731417
 APPLICABLE HOUSING : MG620689
 APPLICABLE SPACER : MG630690
- CAVITY NO. : TAPER 15°(H: 0.1-0.2, SIZE: 1.2)
- 6 HAZARDOUS SUBSTANCES IN PARTS (LEAD, MERCURY, CADMIUM, HEXAVALENT CHROMIUM, PBBs, PBDEs) SHALL NOT EXCEED THE MAXIMUM PERMISSIBLE CONCENTRATION PRESCRIBED UNDER EU ELV DIRECTIVE & RoHS REGULATION.

주 기

- 기능상 유해한 BURR 및 WELDLINE 등이 없을 것.
- 적용 TERMINAL : PA= ST730186, ST730192, ST730383
 △ 적용 TERMINAL : SDL(070)= ST730497, ST730498, ST731417
 적용 HOUSING : MG620689
 적용 SPACER : MG630690
- CAVITY NO : 기울기 15°(H: 0.1-0.2, SIZE: 1.2)
- 제품내 함유된 6대 유해물질 (납, 수은, 카드뮴, 6가크롬, PBBs, PBDEs)은 EU ELV 지침 및 RoHS 법규에서 지정한 최대 허용 농도를 초과해서는 안 된다.

APPROVED

2018-12-10

KOREA ELECTRIC
TERMINAL CO., LTD.
Korea Electric Terminal Co., LTD.

ISSUE MARK

						MATERIAL		PBT		KOREA ELECTRIC TERMINAL CO., LTD.			
						FINISH		NATURAL					
						WIRE RANGE		CLASS 070(SDL) + 118(PA)					
						INSULATION		TYPE HYBRID					
△ ECO-1605-335 근거 도면 재작성		KCS		LSY		2016.05.31		TOLERANCE EXCEPT AS NOTED		SCALE 2/1		PART NO. MG610688	
LTR		REVISION RECORD		DR.		CHK.		APP.		DATE		PART NAME	
DR. KMH. 08.06.18		CHK.		APP.								DOOR 21P PLUG HOUSING	