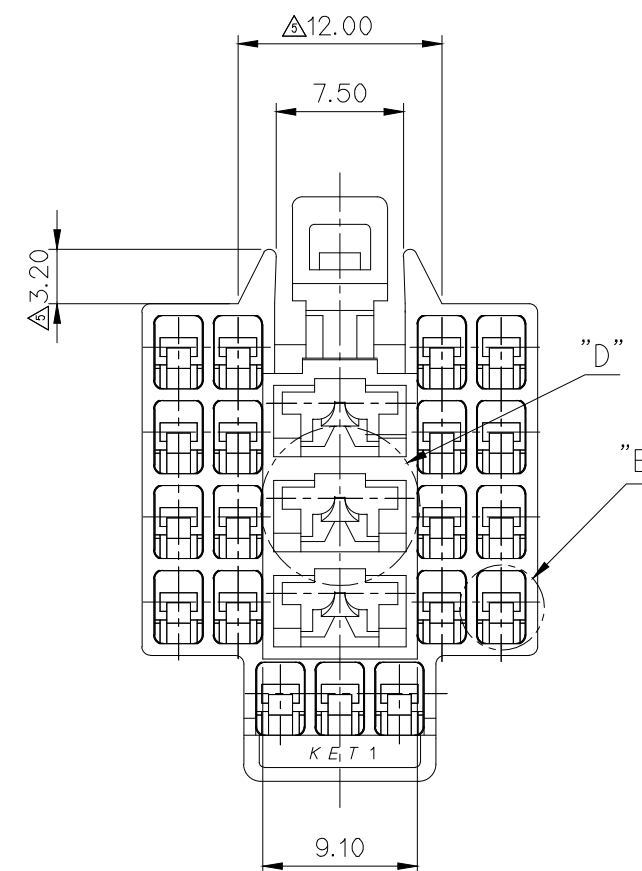
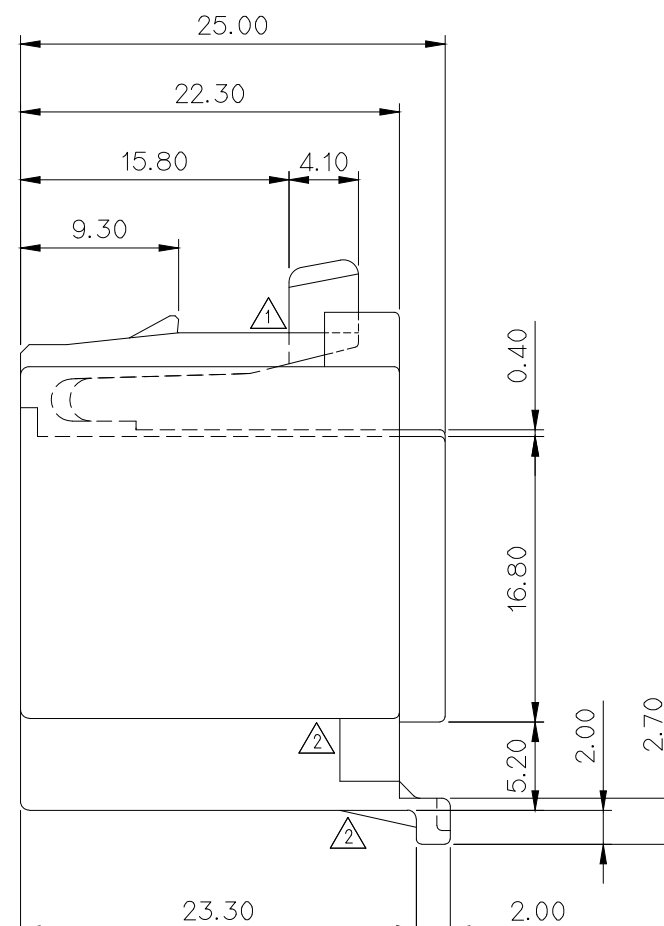
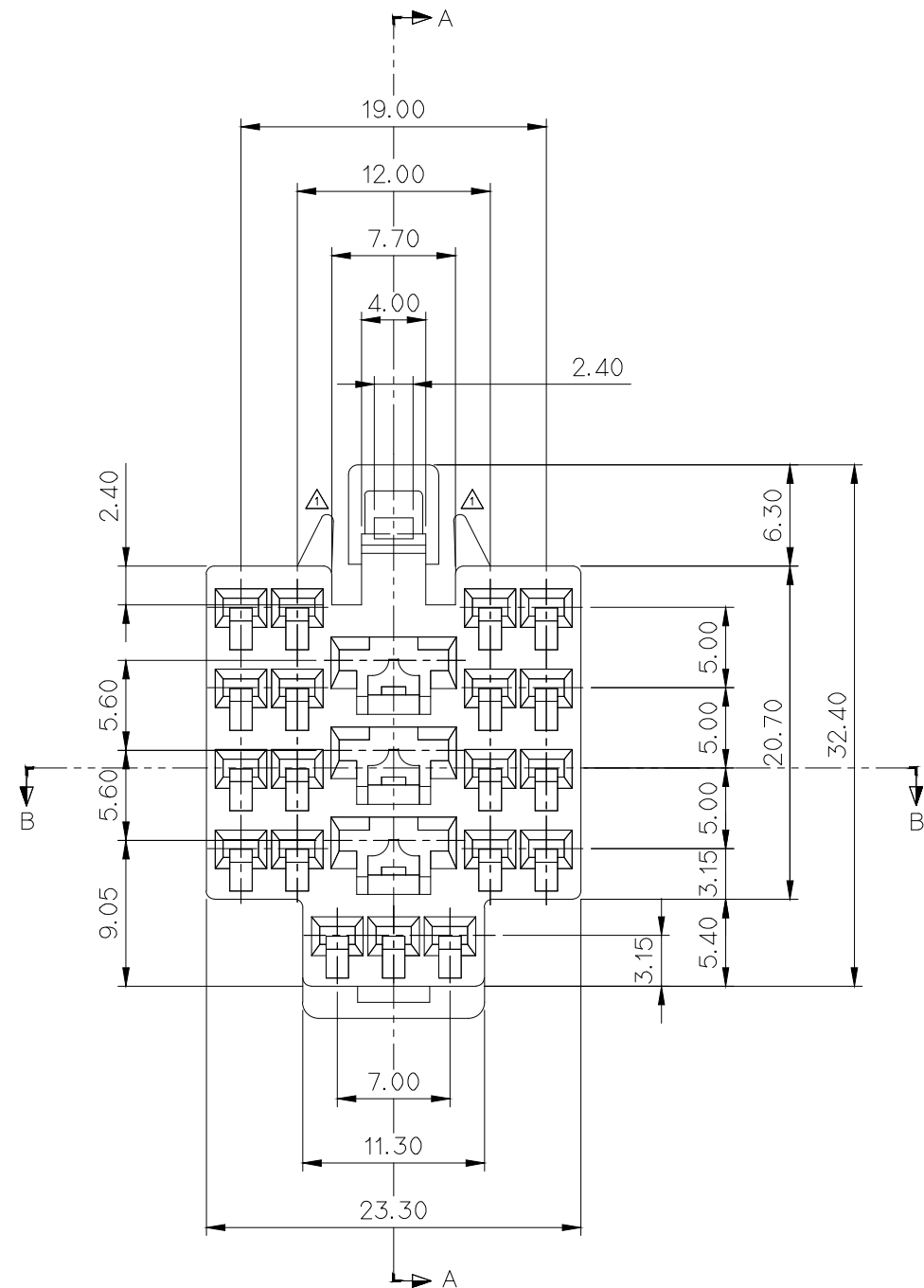
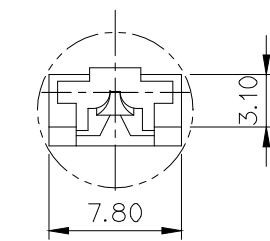


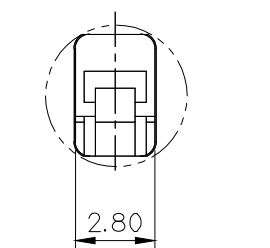
GENERAL TOLERANCE (HOUSING)							USED ON
10MAX	50MAX	100MAX	250MAX	250VR	ANGLE	ECCENT	
±0.2	±0.3	±0.55	±0.95	±1.4	±30'	0.1	



NO.	MATERIAL	COLOR
0	P B T	NATURAL
1		RED
2		BLUE
20		JADE
3		YELLOW
4		GRAY
40		DARK GRAY
41		LIGHT GRAY
5		BLACK
6		DARK GREEN
7		BROWN
8		LIGHT GREEN
9		MAGENTA
11		ORANGE



DETAIL "D"
(S= 5/1)

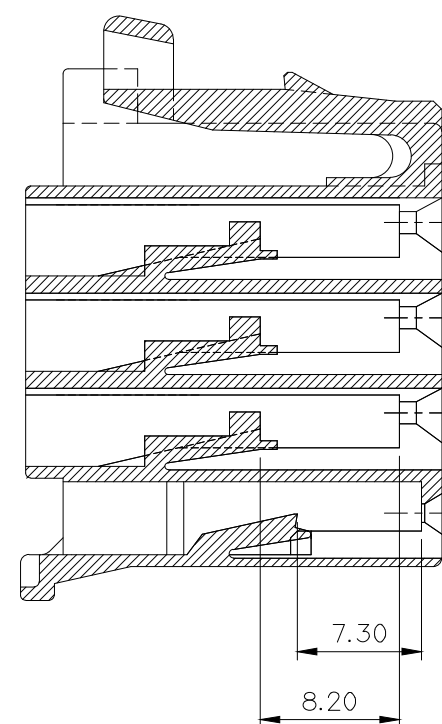


DETAIL "E"
(S= 5/1)

APPROVED
2020-12-24
KOREA ELECTRIC
TERMINAL CO., LTD.
Korea Electric Terminal Co., LTD.

NOTE

- UNLESS OTHERWISE SPECIFIED ALL R TO BE 0.3 RADIUS.
- MUST BE FREE OF BURR AND WELDLINE IMPERFECTION THAT AFFECT FUNCTION.
- APPLICABLE TERMINAL : ST730497-3, ST730498-3, ST731417-3(.070TYPE : 19EA)
ST730267-3, ST730268-3, ST730269-3, ST731420-3, ST731421-3(.250TYPE : 3EA)
- APPLICABLE HOUSING : MG620838
- 6 HAZARDOUS SUBSTANCES IN PARTS (LEAD, MERCURY, CADMIUM, HEXAVALENT CHROMIUM, PBBs, PBDEs) SHOULD NOT EXCEED THE MAXIMUM PERMISSIBLE CONCENTRATION PRESCRIBED UNDER EU ELV DIRECTIVE & RoHS REGULATION.



SECTION A-A

주 기

- 지시하지 않은 R은 전부 0.3으로 한다.
- 제품기능상 유해한 BURR, 변형 및 WELDLINE 등이 없을것.
- 적용 TERMINAL: ST730497-3, ST730498-3, ST731417-3(.070TYPE : 19EA)
ST730267-3, ST730268-3, ST730269-3, ST731420-3, ST731421-3(.250TYPE : 3EA)
- 적용 HOUSING: MG620838
- 제품내 함유된 6대 유해물질 (납,수은,카드뮴,6가크롬,PBBs,PBDEs)은 EU ELV 지침 및 RoHS 법규에서 지정한 최대 허용 농도를 초과해서는 안된다.

ECO-2006-221 근거 도면 재작성	SKM	HYJ	CJH	20.06.18	MATERIAL	SEE TABLE	KIET KOREA ELECTRIC ENGINEERED TERMINAL CO., LTD.
ECO-1702-232 근거 도면 재작성	JHLK	CKY	SUK	17.02.15	FINISH	SEE TABLE	
ECO-1605-335 근거 도면 재작성	KCS	CKY	LSY	16.05.27	WIRE RANGE	CLASS	PART NO. MG610837
시방변경(030171) 근거, 누락형상추가	HSW	-	KCH	03.10.02	INSULATION	TYPE	
시방변경(980264) 근거 (3곳)	KIM	KKJ	JJH	98.12.26	TOLERANCE EXCEPT AS NOTED	SCALE 2/1	PART NAME 2507 PLUG HOUSING 22P
LTR	REVISION RECORD	DR.	CHK.	APP.	DATE		
DR. RHO. 94. 10. 20		CHK. JJH. 94. 10. 20		APP. WAT. 94. 10. 20			

ISSUE MARK

KIET KOREA ELECTRIC
ENGINEERED TERMINAL CO., LTD.

CLASS

TYPE

PART NO. MG610837

2507 PLUG HOUSING 22P