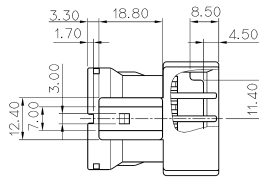
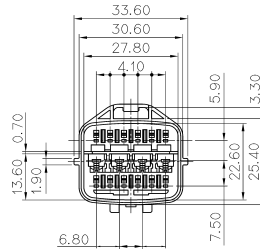
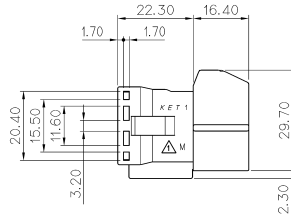


GENERAL TOLERANCE (HOUSING)							USED ON
10MAX	50MAX	100MAX	250MAX	250VR	ANGLE	ECCENT	
±0.2	±0.3	±0.55	±0.95	±1.4	±30'	0.1	

NOTE

- MUST BE FREE OF FLASH, SINK AND IMPERFECTION THAT AFFECT FUNCTION.
- APPLICABLE REC HS'G : MG641767
- APPLICABLE REAR HOLDER : MG631766
- APPLICABLE TAB TERMINAL : ST740709(050)
ST740686, 687, 688(090II)



NO.	METERIAL	COLOR
0	△ P B T:	NATURAL
1	KP-270	RED
2		BLUE
3		YELLOW
4(0)		DARK GRAY
4(1)		LIGHT GRAY
5		BLACK
6		W/GREEN
7		BROWN
8		GREEN
9	MAGENTA	

*

*"△"는 인쇄 사용중인 COLOR임.

주 기

- 제품기능상 유해한 BURR, 변형 및 WELDLINE 등이 없을것.
- 적용 REC HOUSING : MG641767
- 적용 REAR HOLDER : MG631766
- 적용 TAB TERMINAL : ST740709(050)
ST740686, 687, 688(090II)



ISSUE MARK

		MATERIAL		SEE TABLE	KOREA ELECTRIC TERMINAL CO., LTD.	
		FINISH		SEE TABLE		
		WIRE RANGE			CLASS SSD + .090II W/P	
		INSULATION			TYPE	
△ 설계사양서(050004)에서 변경 사항 (원래는 KCS 및 M에서 온 것)		RBS	4/16	06.02.27	PART NO. MG611764	
LTR	REVISION RECORD	DR	CHK	APP.	DATE	SCALE 1/1 PART NAME SSD(0509)-16P PLUG HS'G
DR.	MAN. '99.04.16.	CHK			4/16	
CHK.		APP.	Choi		4/14	