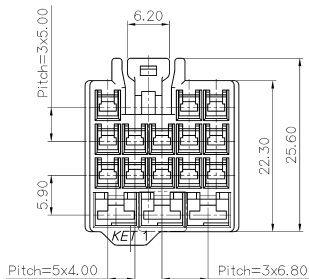
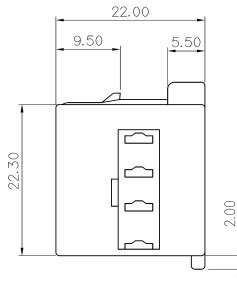
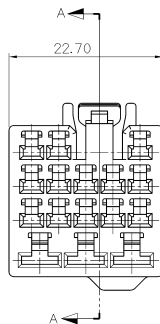
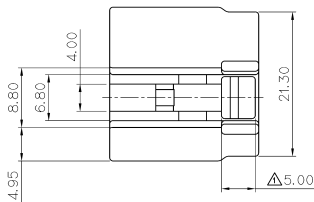


SECTION A-A



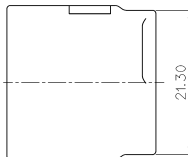
NOTE

- MUST BE FREE OF FLASH, SINK AND IMPERFECTION THAT AFFECT FUNCTION.
- APPLICABLE TERMINAL : ST730675, 676, 677  
ST730644, 645, 646  
APPLICABLE HOUSING : MG622390  
APPLICABLE SPACER : MG632392
- CAVITY NO. : TAPER 0°(H); 0.1~0.2, SIZE: 1.5)
- HAZARDOUS SUBSTANCES IN PARTS (LEAD, MERCURY, CADMIUM, HEXAVALENT CHROMIUM, PBBs, PBDEs) SHALL NOT EXCEED THE MAXIMUM PERMISSIBLE CONCENTRATION PRESCRIBED UNDER EU ELV DIRECTIVE & RoHS REGULATION.

주 기

- 기능상 유해한 BURR 및 WELDLINE 등이 없음을.
- 적용 TERMINAL(09011): ST730675, 676, 677  
적용 TERMINAL(18711): ST730644, 645, 646  
적용 HOUSING: MG6212390  
적용 SPACER: MG632392
- CAVITY NO.: 가솔기 0°(H); 0.1~0.2, SIZE: 1.5)
- 제품내 함유된 6대 유해물질 (납, 수은, 카드뮴, 6가크롬, PBBs, PBDEs)은 EU ELV 지침 및 RoHS 법규에서 지정한 최대 허용 농도를 초과해서는 안된다.

NO.	MATERIAL	COLOR
0	P B T:	NATURAL
1		RED
2		BLUE
3		YELLOW
40		DARK GRAY
* 41		LIGHT GRAY
5		BLACK
6		DARK GREEN
7		BROWN
8		LIGHT GREEN
9		MAGENTA
11	ORANGE	



ISSUE MARK

MATERIAL		SEE TABLE	KHS		08.04.24	WIRE RANGE		CLASS 0901(13P) + 1871(3P)	
FINISH		SEE TABLE	YSW		06.11.07	INSULATION		TYPE HYBRID	
REVISION RECORD		DR	CHK	APP.	DATE	SCALE		PART NO.	
DR. KJ.LEE. 01.10.08		CHK	APP.	DATE	SCALE		PART NO.		MG612391
PART NAME		HYBRID 1809 16F HOUSING							