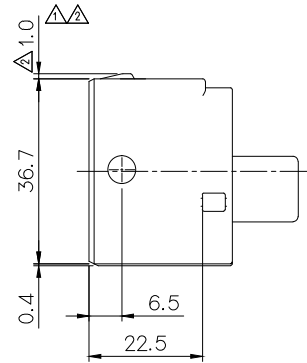
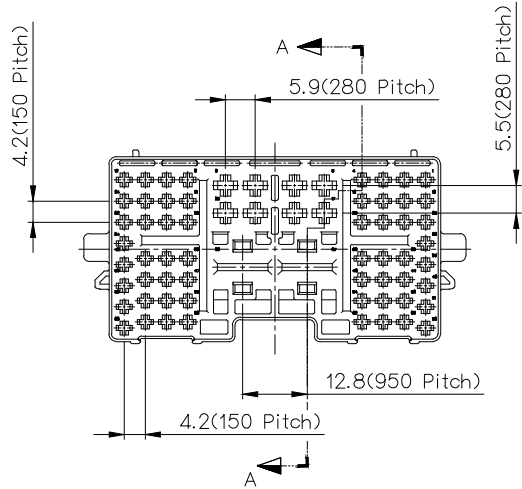
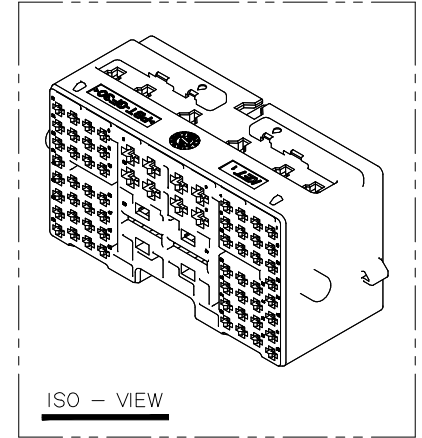
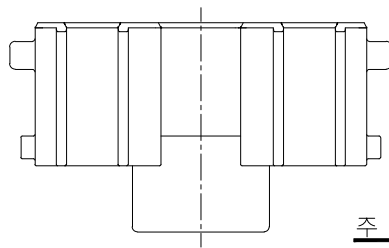
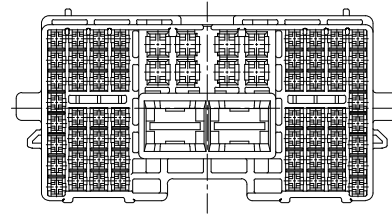


GENERAL TOLERANCE (HOUSING)							USED ON
10MAX	50MAX	100MAX	250MAX	250VR	ANGLE	ECCENT	
±0.2	±0.3	±0.55	±0.95	±1.4	±30'	0.1	



SECTION A-A



주 기

1. 기능상 유해한 BURR 및 WELDLINE 등이 없을 것.
2. 적용 TERMINAL : TYCO 150 964261,964263 (MT2)
TYCO 950 962932 (MPT)
TYCO 280 964280,964284,965999 (JPT)
3. 적용 TPA : MG634616-4
4. 제품내 함유된 6대 유해물질 (납,수은,카드뮴,6가크롬, PBBs,PBDEs)은 EU ELV 지침 및 RoHS 법규에서 지정한 최대 허용 농도를 초과해서는 안된다.

NOTE

1. MUST BE FREE OF FLASH, SINK AND IMPERFECTION THAT AFFECT FUNCTION.
2. APPLICABLE TERMINAL :
TYCO 150 964261,964263 (MT2)
TYCO 950 962932 (MPT)
TYCO 280 964280,964284,965999 (JPT)
3. APPLICABLE TPA : MG634616-4
4. 6 HAZARDOUS SUBSTANCES IN PARTS (LEAD, MERCURY, CADMIUM, HEXAVALENT CHROMIUM, PBBs, PBDEs) SHALL NOT EXCEED THE MAXIMUM PERMISSIBLE CONCENTRATION PRESCRIBED UNDER EU ELV DIRECTIVE & RoHS REGULATION.

APPROVED

2018-12-10

KOREA ELECTRIC
TERMINAL CO., LTD.
Korea Electric Te
rminal Co., LTD.

ISSUE MARK

					MATERIAL	PBT-GF30	KET KOREA ELECTRIC ENGINEERED TERMINAL CO., LTD.	
					FINISH	BLACK		
					WIRE RANGE	 	CLASS	Body-IP 68P
					INSULATION	 	TYPE	
ECO NO.(1108-116) 근거 도면 재작성	LDG	-	-	25.AUG.'11	TOLERANCE EXCEPT AS NOTED	SEE TABLE	SCALE	1/1
실제시양변경(110118) 근거 도면 재작성	LDG	-	-	19.APR.'11			PART NO.	MG614615-5
LTR	REVISION RECORD			DR.	CHK.	APP.	DATE	
DR.	B.JG. 08.SEP.2010			CHK.	-	APP.	08.SEP.'10	
CHK.	 			APP.	-	APP.	08.SEP.'10	
PART NAME							Body-IP 68F Housing	