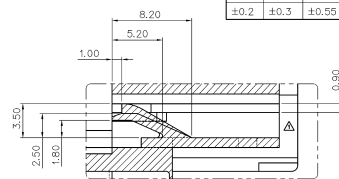
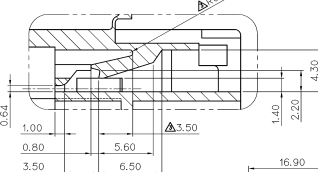
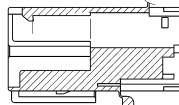
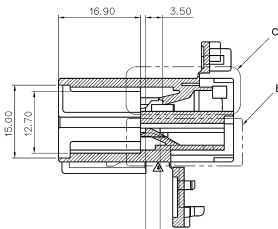


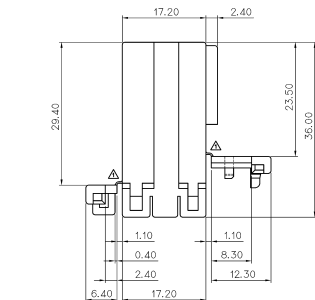
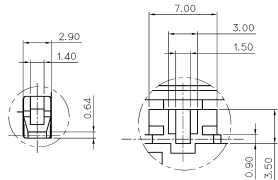
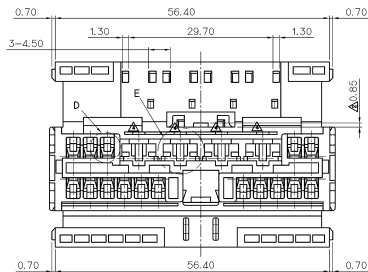
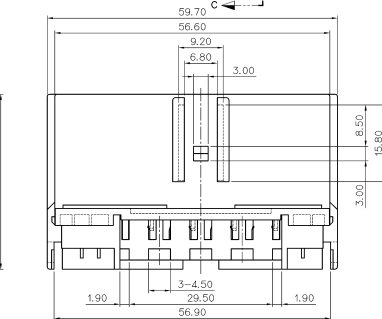
GENERAL TOLERANCE (HOUSING)							USED ON
10MAX	50MAX	100MAX	250MAX	250VR	ANGLE	ECCENT	
±0.2	±0.3	±0.55	±0.95	±1.4	±30'	0.1	

DETAIL B
(S= 4/1)DETAIL C'
(S= 4/1)

SECTION B-B



SECTION C-C

DETAIL D
(S= 4/1)DETAIL E
(S= 4/1)

주 기

- 치아는 R은 0.5로 한다
- 적용 HOUSING : M610571
- 각 부위별 국어(250 TYPE : 4P, 070 TYPE : 16P)
- 적용 TERMINAL : 1)SD1 TERMINAL(ST7404B,4,4B5)
2)250 D/L TERMINAL(ST740470,471,472)
- 비표나 환유문 등 유해물질 (납,수은,카드뮴,6가크롬, PBBs,PBOEs)은 EU ELV 지침 및 RoHS 법규에서 지정한 최대 허용 농도를 초과해서는 안된다.

▲ KET (KOREA ELECTRIC TERMINAL CO., LTD.)	FIGS	3/15/26	MATERIAL	NYLON66	
▲ KET (KOREA ELECTRIC TERMINAL CO., LTD.)	REVISED	36.04.29	FINISH	NATURAL	
▲ KET (KOREA ELECTRIC TERMINAL CO., LTD.)	DESIGNED	36.04.03	WIRE RANGE		CLASS
▲ KET (KOREA ELECTRIC TERMINAL CO., LTD.)	CHK	37.02.14	INSULATION		TYPE
▲ KET (KOREA ELECTRIC TERMINAL CO., LTD.)	DATE	34.01.03			SCALE
▲ KET (KOREA ELECTRIC TERMINAL CO., LTD.)	APP				PART NO.
DR. RHO, 1993.08.09	CHK		SEE TABLE	2/1	M620572
CHK	APP		PART NAME	2507 20M HOUSING	



ISSUE MARK

KOREA ELECTRIC
TERMINAL CO., LTD.