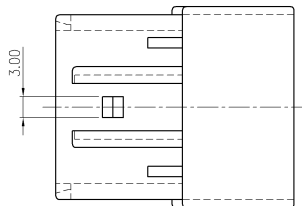
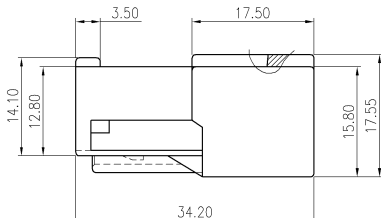
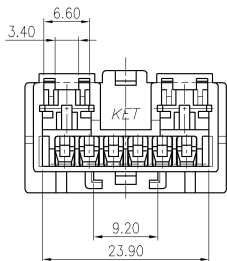


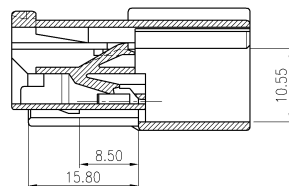
주 기

- 제품 기능상 유해한 BURR, 변질 및 WELDLINE 등이 없을 것.
- 적용 TERMINAL: ST740470, 471, 472 (250 TYPE: 2EA)  
ST740484, 485 (070 TYPE: 6EA)
- 적용 HOUSING: MG610802
- 적용 CLIP: MG630418
- 적용 R/H: MG630915
- 제품내 함유된 6대 유해물질 (납, 수은, 카드뮴, 6가크롬, PBBs, PBDEs)은 EU ELV 지침 및 RoHS 법규에서 지정한 최대 허용 농도를 지정한 최대 허용 농도를 초과해서는 안된다.

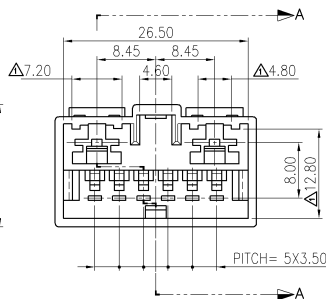
NO.	MATERIAL	COLOR
* 0		NATURAL
1	PBT	RED
2		BLUE
20		JADE
3		YELLOW
4		GRAY
40		DARK GRAY
41		LIGHT GRAY
5		BLACK
6		DARK GREEN
7		BROWN
8	LIGHT GREEN	
9	MAGENTA	
11	ORANGE	



GENERAL TOLERANCE (HOUSING)							USED ON
10MAX	50MAX	100MAX	250MAX	250VR	ANGLE	ECCENT	
±0.2	±0.3	±0.55	±0.95	±1.4	±30'	0.1	



SECTION A-A



△NOTE

- MUST BE FREE OF FLASH, WELDLINE AND IMPERFECTION THAT AFFECT FUNCTION.
- APPLICABLE TERMINAL: ST740470, 471, 472 (250 TYPE: 2EA)  
ST470484, 485 (070 TYPE: 6EA)
- MATCHING HOUSING : MG610802
- APPLICABLE CLIP: MG630418
- APPLICABLE R/H: MG630915
- 6 HAZARDOUS SUBSTANCES IN PARTS (LEAD, MERCURY, CADMIUM, HEXAVALENT CHROMIUM, PBBs, PBDEs) SHALL NOT EXCEED THE MAXIMUM PERMISSIBLE CONCENTRATION PRESCRIBED UNDER EU ELV DIRECTIVE & RoHS REGULATION.

ISSUE MARK

				MATERIAL	SEE TABLE		KOREA ELECTRIC TERMINAL CO., LTD.
				FINISH	SEE TABLE		
				WIRE RANGE		CLASS	090 II
				INSULATION		TYPE	
△ 설계/인원 (S100115)2가 2면 재작성 KMJ 10.05.13	LTR REVISION RECORD	DR. CHK. APP. DATE	TOLERANCE PERCENTAGE	±0.20	SCALE 4/1	PART NO. MG620803	
CHK. S.W.Ker 4/1	APP.	PART NAME	2507 8M HOUSING				