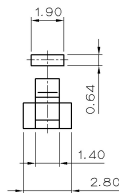


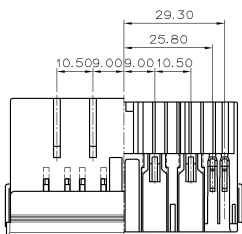
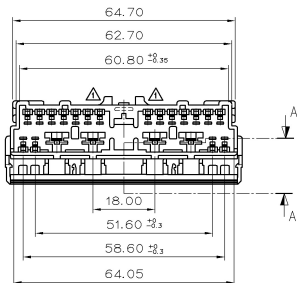
250 CAVITY DETAIL(5/1)



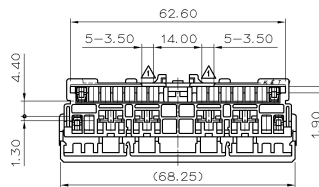
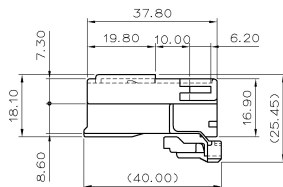
070 CAVITY DETAIL(5/1)

## NOTE

1. MUST BE FREE OF FLASH, WELDLINE AND IMPERFECTION THAT AFFECT FUNCTION.
2. APPLICABLE HOUSING : MG611133, MG631135
3. APPLICABLE TERMINAL : ST740253, 254, 255 (250TYPE)  
ST740484, 485 (070TYPE)
- △ 4. 6 HAZARDOUS SUBSTANCES IN PARTS (LEAD, MERCURY, CADMIUM, HEXAVALENT CHROMIUM, PBBs, PBDEs) SHALL NOT EXCEED THE MAXIMUM PERMISSIBLE CONCENTRATION PRESCRIBED UNDER EU ELV DIRECTIVE & RoHS REGULATION.



SECTION A-A



## 주 기

1. 기능상 유해한 변형등 BURR 없을 것.
2. 적용 HOUSING : MG611133, MG631135
3. 적용 TERM (1) 250 사양 : ST740253, 254, 255  
(2) 070 사양 : ST740484, 485
- △ 4. 제품내 함유된 6대 유해물질(납, 수은, 카드뮴, 6가 크롬, PBBs, PBDEs)은 EU ELV 지침 및 RoHS 법규에서 지정한 최대 허용 농도를 초과해서는 안된다.

NO.	MATERIAL	COLOR
0	P B T	NATURAL
1		RED
2		BLUE
20		JADE
3		YELLOW
4		GRAY
40		DARK GRAY
41		LIGHT GRAY
5		BLACK
6		DARK GREEN
7		BROWN
8		LIGHT GREEN
9		MAGENTA
11		ORANGE

\* \*는 현재 사용중인 COLOR임.

						(MATERIAL)	P B T	KET	KOREA ELECTRIC TERMINAL CO., LTD.
						(FINISH)	NATURAL		
						(WIRE RANGE)		(CLASS)	
						(INSULATION)		(TYPE)	
△	공기중 수분 함량 (20°C, 50%RH) 또는 내장 수분 함량 (20°C, 50%RH)	2009.01.05							
LTR	REVISION RECORD	DR	CHK	APP.	DATE	COUPLAGE (SCALE)	±0.2	(NO.)	MG621134
DR	KJ KIM	97.01.15	CHK.			(NAME)			
CHK.			APP.						2507 22P REC' HOUSING