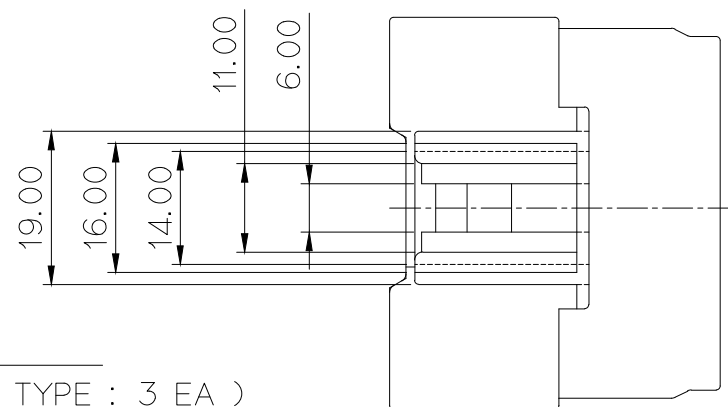
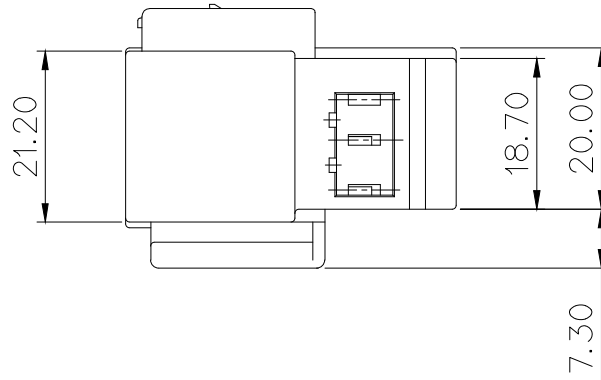
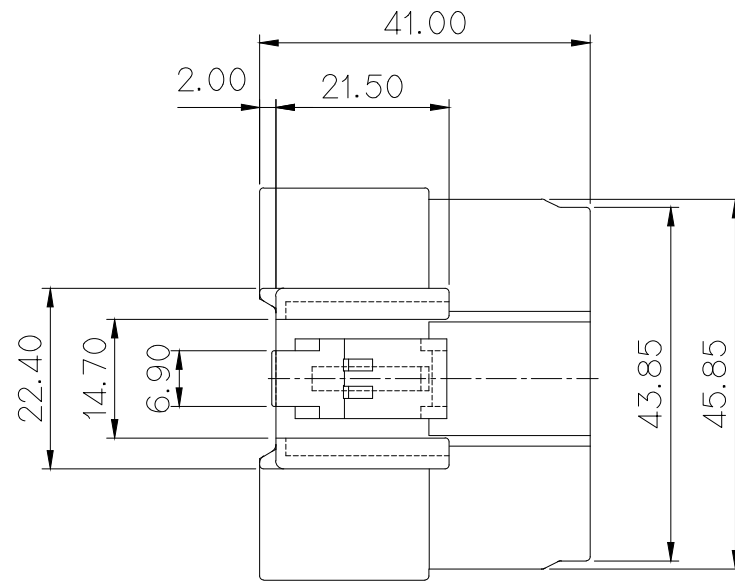
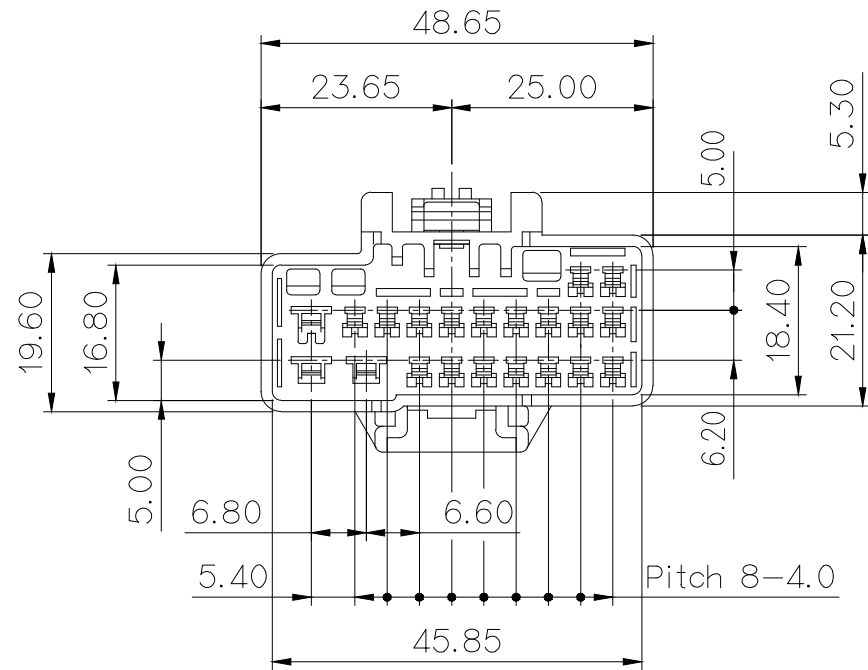


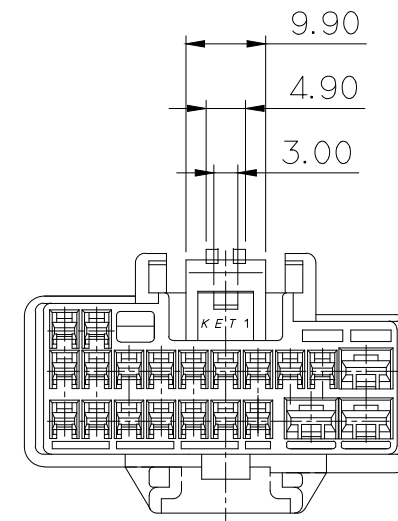
NO.	MATERIAL	COLOR
* 0	P B T	NATURAL
1		RED
* 2		BLUE
20		JADE
* 3		YELLOW
4		GRAY
40		DARK GRAY
41		LIGHT GRAY
5		BLACK
6		DARK GREEN
7		BROWN
8		LIGHT GREEN
9	MAGENTA	
11	ORANGE	



GENERAL TOLERANCE (HOUSING)							USED ON
10MAX	50MAX	100MAX	250MAX	250VR	ANGLE	ECCENT	MG612102
±0.2	±0.3	±0.55	±0.95	±1.4	±30'	0.1	

주 기

- 지시하지 않는 R은 전부 0.5로 할것.
- 제품기능상 유해한 BURR, 변형 및 WELDLINE 등이 없을것.
- 적용 TERMINAL: ST740631,632,633 (.187 TYPE : 3 EA)
ST740672,673,674 (.090 TYPE : 18 EA)
- 적용 SPACER: MG632106-9
- 제품내 함유된 6대 유해물질 (납, 수은, 카드뮴, 6가 크롬, PBBs, PBDEs)은 EU ELV 지침 및 RoHS 법규에서 지정한 최대 허용 농도를 초과해서는 안된다.



NOTE

- UNLESS OTHERWISE SPECIFIED ALL RADIUS TO BE 0.5 RADIUS.
- MUST BE FREE OF BURR, WELDLINE AND IMPERFECTION THAT AFFECT FUNCTION.
- APPLICABLE TERMINAL: ST740631,632,633 (.187 TYPE : 3 EA)
ST740672,673,674 (.090 TYPE : 18 EA)
- APPLICABLE SPACER :MG632106-9
- 6 HAZARDOUS SUBSTANCES IN PARTS (LEAD, MERCURY, CADMIUM, HEXAVALENT CHROMIUM, PBDEs) SHALL NOT EXCEED THE MAXIMUM PERMISSIBLE CONCENTRATION PRESCRIBED UNDER EU ELV DIRECTIVE.

APPROVED

2018-12-07

**KOREA ELECTRIC
TERMINAL CO., LTD.
Korea Electric Te
rminal Co., LTD.**

ISSUE MARK

					MATERIAL	SEE TABLE	KET KOREA ELECTRIC ENGINEERED TERMINAL CO., LTD.	
					FINISH	SEE TABLE		
					WIRE RANGE		CLASS	
					INSULATION		TYPE	
LTR	REVISION RECORD	DR.	CHK.	APP.	DATE	TOLERANCE EXCEPT AS NOTED	SCALE	PART NO.
	HEO '00. 04. 14		KKJ		4/14	SEE TABLE	1/1	MG622104
			CHOSH		4/14	PART NAME	.1809 21P REC. HOUSING(A)	