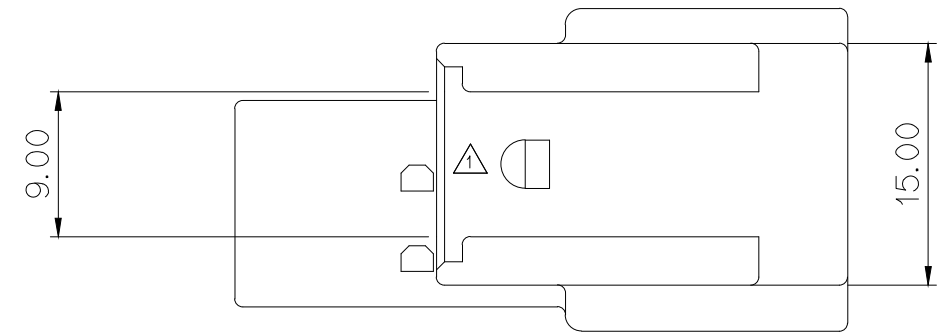
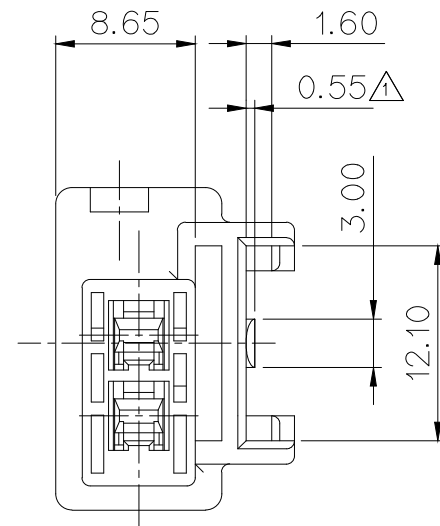
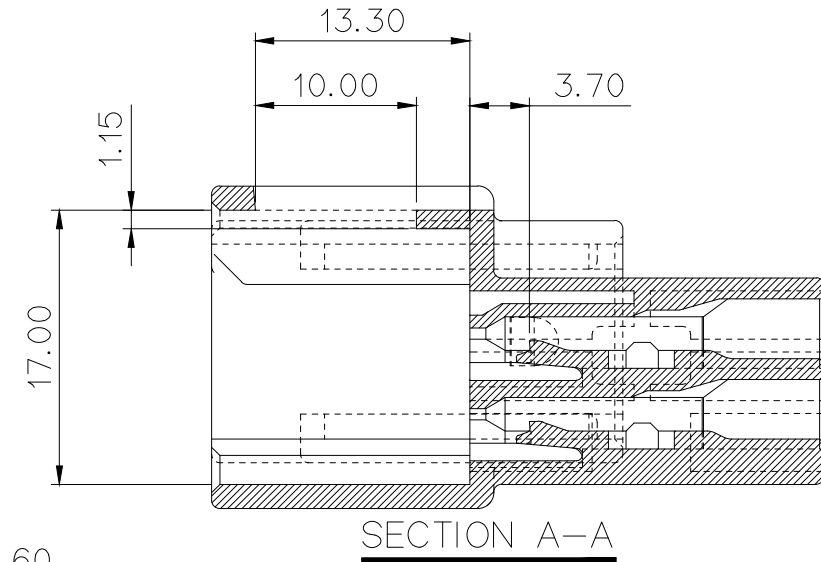


GENERAL TOLERANCE (HOUSING)							USED ON
10 MAX	50 MAX	100 MAX	250 MAX	250 VR	ANGLE	ECCENT	
±0.2	±0.3	±0.55	±0.95	±1.4	±30'	0.1	



NOTE

- MUST BE FREE OF BURR, WELDLINE AND IMPERFECTION THAT AFFECT FUNCTION.
 APPLICABLE TERMINAL : ST740672, 673, 674
 APPLICABLE HOUSING : MG612952, MG651759
 APPLICABLE SPACER : MG632954
 APPLICABLE CLIP : MG631267, 631268, 631471, 632019
- 6 HAZARDOUS SUBSTANCES IN PARTS (LEAD, MERCURY, CADMIUM, HEXAVALENT CHROMIUM, PBBs, PBDEs) SHALL NOT EXCEED THE MAXIMUM PERMISSIBLE CONCENTRATION PRESCRIBED UNDER EU ELV DIRECTIVE & RoHS REGULATION.

주 기

- 기능상 유해한 BURR 및 WELDLINE 등이 없을 것.
- 적용 TERMINAL: ST740672, 673, 674
 적용 HOUSING: MG612952, MG651759
 적용 SPACER: MG632954
 적용 CLIP: MG631267, 631268, 631471, 632019
- 제품내 함유된 6대 유해물질 (납, 수은, 카드뮴, 6가크롬, PBBs, PBDEs)은 EU ELV 지침 및 RoHS 법규에서 지정한 최대 허용 농도를 초과해서는 안 된다.

APPROVED
 2018-12-07
 KOREA ELECTRIC
 TERMINAL CO., LTD.
 Product Development Team 1

ISSUE MARK

					MATERIAL	PBT	KET KOREA ELECTRIC ENGINEERED TERMINAL CO., LTD.
					FINISH	NATURAL	
					WIRE RANGE		CLASS .090
					INSULATION		TYPE
△	ECO-1204-065 근거 도면 제작성	CJH		'12.04.18	TOLERANCE EXCEPT AS NOTED	SCALE 2/1	PART NO. MG622953
LTR	REVISION RECORD	DR.	CHK.	APP.	DATE		
	WON. 2003.01.10				1/15		
CHK.			APP.		1/16	PART NAME	ASC 2M HOUSING(VRT)