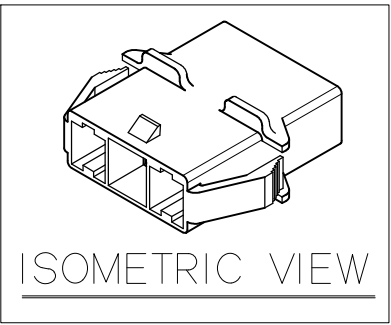


△2 GENERAL TOLERANCE (HOUSING)					USED ON
10MAX	50MAX	100MAX	100VR	()	
±0.25	±0.35	±0.55	±0.95	±1.0	



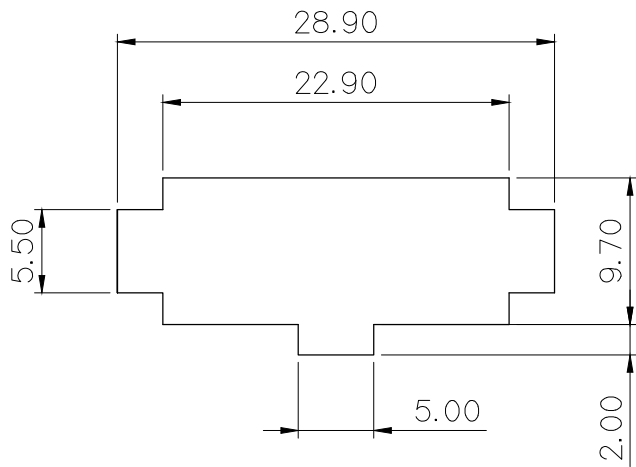
NOTE

- MUST BE FREE OF BURR, WELDLINE AND IMPERFECTION THAT AFFECT FUNCTION.
- APPLICABLE HOUSING : MG615307*
△3 TERMINAL : ST741435 (1 HOLE)/ST731433 (2 HOLE)
ST741436 (3 HOLE)
REAR HOLDER : MG635318
- 6HAZARDOUS SUBSTANCES IN PARTS (Lead, Mercury, Cadmium, Hexavalent Chromium, PBBs, PBDEs) SHALL NOT EXCEED THE MAXIMUM PERMISSIBLE CONCENTRATION PRESCRIBED UNDER EU ELV DIRECTIVE & RoHS REGULATION

주 기

- 기능상 유해한 BURR 및 WELDLINE등이 없을것.
- 적용 하우징 : MG615307*
△3 터미널 : ST741435 (1 HOLE) / ST731433 (2 HOLE)
ST741436 (3 HOLE)
리홀더 : MG635318
- 제품 내 함유된 6대 유해물질 (납, 수은, 카드뮴, 6가 크롬, PBBs, PBDEs)은 EU ELV 지침 및 RoHS 법규에서 지정한 최대 허용농도를 초과해서는 안 된다.

ISSUE MARK



PANEL HOLE DIMENSION

△3△1			
NO.	PART NO.	MATERIAL	A
1	MG625308	PBT (VO)	△(31.70)
2	MG625308T	PET/PC (G.W.I.T)	△(32.40)

△2			
NO.	COLOR	MG625308	MG625308T
0	NATURAL	*	*
1	RED		
2	BLUE	*	*
3	YELLOW		*
5	BLACK		

						MATERIAL △1 SEE TABLE	KET KOREA ELECTRIC ENGINEERED TERMINAL CO., LTD.	
						FINISH △2 SEE TABLE		
△3	ECO-1809-146 근거 도면 수정	PSH	KSH	BUC	'18.09.12	WIRE RANGE	CLASS NEW 070 MULTI	
△2	ECO-1610-081 근거 도면 수정	SMG	KSH	BUC	16.10.07	INSULATION	TYPE	
△1	ECO-1107-325 근거 도면 수정	PJM	KSH	BUC	11.07.20	TOLERANCE △2 EXCEPT SEE TABLE	SCALE 2/1	PART NO. △1 MG625308 / MG625308T
LTR	REVISION RECORD		DR.	CHK.	APP.	DATE	PART NAME	
	DR. P.J.M '10.12.23		CHK. KSH			12/23	NEW 070 MULTI 3M HOUSING_WING	
CHK.			APP. [Signature]			12/23		