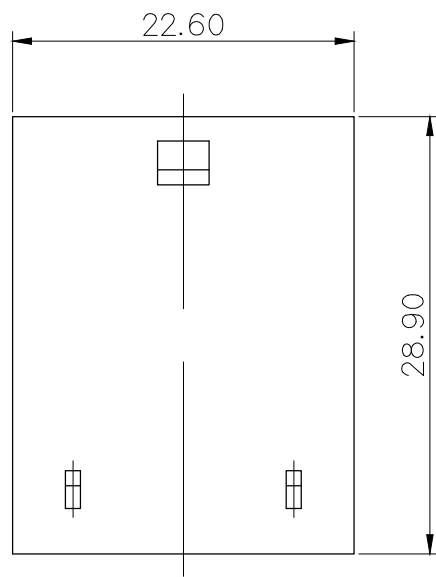
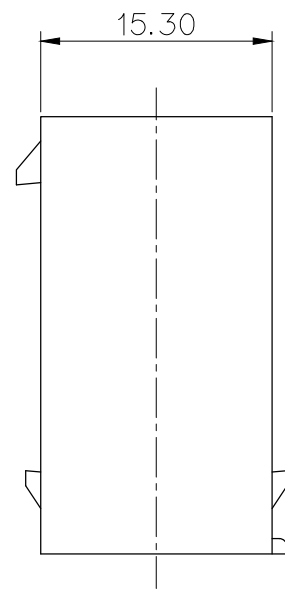


VIEW 'A'



↑  
"A"



NOTE

1. MUST BE FREE OF FLASH, SINK AND IMPERFECTION THAT AFFECT FUNCTION.
2. 6 HAZARDOUS SUBSTANCES IN PARTS (LEAD, MERCURY, CADMIUM, HEXAVALENT CHROMIUM, PBBs, PBDEs) SHALL NOT EXCEED THE MAXIMUM PERMISSIBLE CONCENTRATION PRESCRIBED UNDER EU ELV DIRECTIVE & RoHS REGULATION.
3. APPLICABLE R/HOLDER : MG635318
- △ 4. APPLICABLE TERMINAL : ST741436 (1, 6 HOLE)  
 ST731433 (2, 5 HOLE)  
 ST741435 (3, 4 HOLE)
5. MATING HOUSING : MG615313\*

주 기

1. 기능상 유해한 FLASH, SINK, 미성형 등이 없을 것.
2. 제품내 함유된 6대 유해물질 (납, 수은, 카드뮴, 6가크롬, PBBs, PBDEs)은 EU ELV 지침 및 RoHS 법규에서 지정한 최대 허용 농도를 초과해서는 안된다.
3. 적용 R/HOLDER : MG635318
- △ 4. 적용 TERMINAL: ST741436 (1, 6 HOLE)  
 ST731433 (2, 5 HOLE)  
 ST741435 (3, 4 HOLE)
5. 상대 HOUSING: MG615313\*

△ NO.	PART NO.	MATERIAL
1	MG615315	PBT (VO)
2	MG615315T	PET/PC (G.W.I.T)

ISSUE MARK

						MATERIAL SEE TABLE		<b>KOREA ELECTRIC TERMINAL CO., LTD.</b>	
						FINISH NATURAL			
△ ECO-1809-146 근거 도면 수정		PSH	KSH	BUC	'18.09.12	WIRE RANGE		CLASS NEW 070 MULTI	
△ ECO-1107-325에 의한 도면 수정		PSH	KSH	BUC	'11.07.20	INSULATION		TYPE	
LTR	REVISION RECORD	DR.	CHK.	APP.	DATE	TOLERANCE EXCEPT AS NOTED ± 0.4	SCALE 2/1	PART NO. △ MG625315 / MG625315T	
DR.	PSH. 10.12.16	CHK.				PART NAME		NEW 070 6M HOUSING	
CHK.	KSH. 10.12.16	APP.		BUC. 10.12.16					