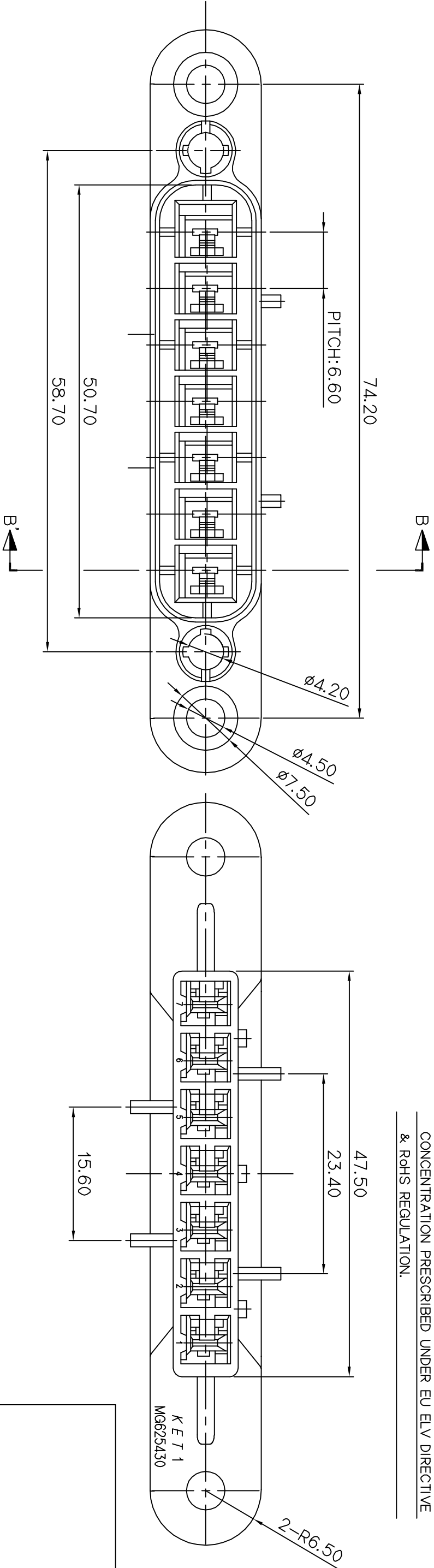



GENERAL TOLERANCE (HOUSING)							USED ON
10 MAX	50 MAX	100 MAX	250 MAX	250 VR	ANGLE	ECCENT	
±0.2	±0.3	±0.55	±0.95	±1.4	±30°	0.1	

- 주 기
- 기능상 유해한 BURR 및 WELDLINE등이 없을것.
 - 적용 TERMINAL : ST741343-3
 - 적용 HOUSING : MG615559-5
 - 적용 R/HOLDER : MG635611-1
 - 제품내 함유된 6대 유해물질 (납,수은,카드뮴,6가크롬, PBBs,PBDEs)은 EU ELV 지침 및 RoHS 법규에서 지정한 최대 허용 농도를 초과해서는 안된다.

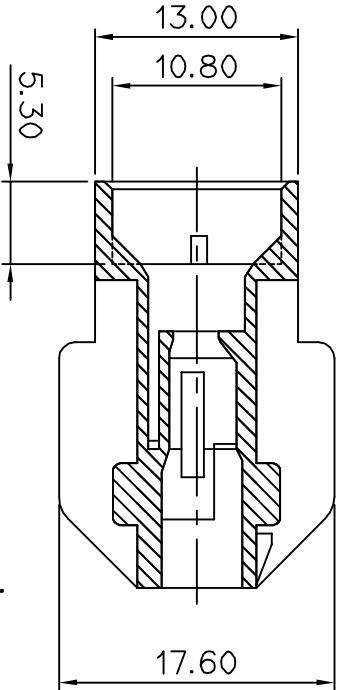
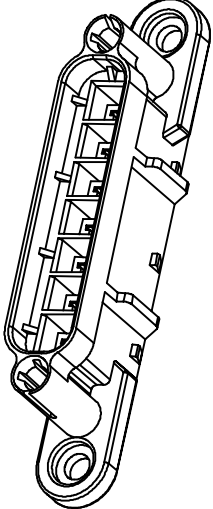
NOTE

- MUST BE FREE OF FLASH, SINK AND IMPERFECTION THAT AFFECT FUNCTION.
- APPLICABLE TERMINAL : ST741343-3
- APPLICABLE HOUSING : MG615559-5
- APPLICABLE R/HOLDER : MG635611-1
- 6 HAZARDOUS SUBSTANCES IN PARTS (LEAD,MERCURY, CADMIUM,HEXVALENT CHROMIUM,PBBs,PBDEs) SHALL NOT EXCEED THE MAXIMUM PERMISSIBLE CONCENTRATION PRESCRIBED UNDER EU ELV DIRECTIVE & RoHS REGULATION.



							MATERIAL	PBT	<div><div>ISSUE MARK</div><div>KIEIT KOREA ELECTRIC ENGINEERED TERMINAL CO., LTD.</div></div>		
							FINISH	BLACK			
							WIRE RANGE				
							INSULATION				
LTR	REVISION RECORD	DR.	CHK.	APP.	DATE		TOLERANCE EXCEPT AS NOTED	SEE TABLE	SCALE	PART NO.	
DR.	KSH '2012.10.26	CHK.							2/1	MG625430-5	
CHK.		APP.	DR.	CHK.	APP.	DATE	PART NAME				
							110(WP) 7M HOUSING				

REFERENCE



DIMENSIONS IN MM