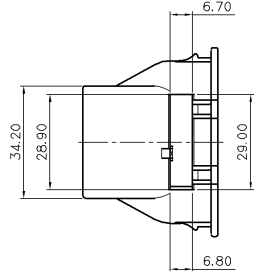
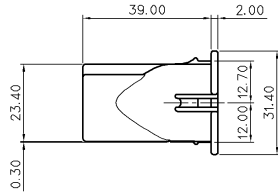
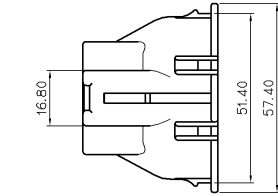


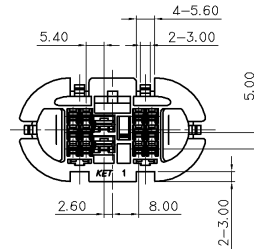
SECTION A-A



GENERAL TOLERANCE (HOUSING)

10 MAX	50 MAX	100 MAX	250 MAX	250 VR	ANGLE	ECCENT	USED ON
±0.2	±0.3	±0.55	±0.95	±1.4	±30'	0.1	

NO.	PART NO.	PART NAME	FINISH
1	MG671812	DOOR 14P REC. HOUSING	NATURAL
2	MG671813	DOOR 14P REC. SPACER	YELLOW



주 기

1. 기능상 유해한 BURR 및 WELDLINE 등이 없을 것.
2. 적용 HOUSING: MG651379
적용 TERMINAL: ST740672, 673, 674(.090)
ST740631, 632, 633(.187)
3. PANEL SIZE: 50.0(W) X 24.0(H) X 0.7(t)
4. SPACER는 본 도면과 같이 1차 조립후 공급함.
5. 제품내 함유된 6대 유해물질 (납, 수은, 카드뮴, 6가크롬, PBBs, PBDEs)은 EU ELV 지침 및 RoHS 법규에서 지정한 최대 허용 농도를 초과해서는 안된다.



ISSUE MARK

		MATERIAL	PBT	KET ENGINEERED	KOREA ELECTRIC
		FINISH	SEE TABLE		TERMINAL CO., LTD.
		WIRE RANGE		CLASS	
		INSULATION		TYPE	
△ 2009.12.02(09.12.02) 2차 신제품 (PANEL 명세 불합격 판)		DR.	09.12.02		
LTR	REVISION RECORD	CHK.	APP.	DATE	SCALE
DR.	KJLEE 01.01.30	CHK.		1/31	PART NO. MG641814
CHK.		APP.		1/31	PART NAME
					DOOR 14P REC. HOUSING ASSY