

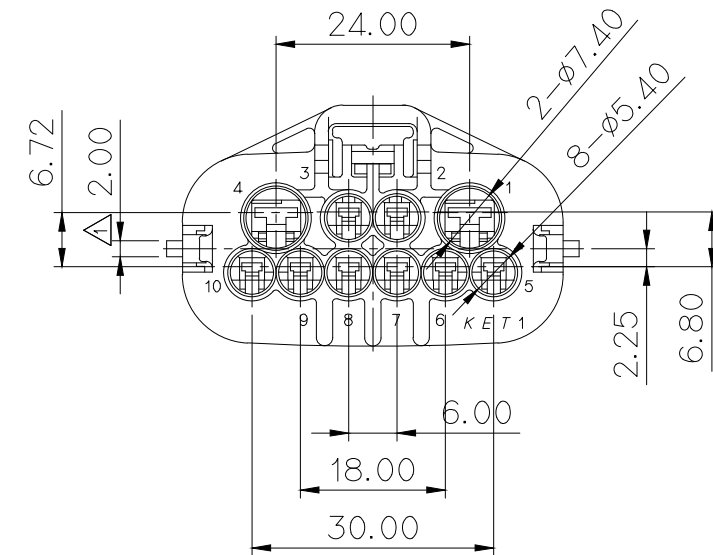
GENERAL TOLERANCE (HOUSING)							USED ON
10 MAX	50 MAX	100 MAX	250 MAX	250 VR	ANGLE	ECCENT	
±0.2	±0.3	±0.55	±0.95	±1.4	±30'	0.1	

주 기

- 제품기능상 유해한 BURR, 변형 및 WELDLINE 등이 없을것.
- 적용 TERMINAL : 090 II - ST730623,624,625
187 II - ST730715,716,717
- 적용 WIRE SEAL : 090 II - MG681114,1115,1116,1119
187 II - MG681367,1370,1371,1372

NOTE

- MUST BE FREE OF FLASH, SINK AND IMPERFECTION THAT AFFECT FUNCTION.
- APPLICABLE TERMINAL : 090 II - ST730623,624,625
187 II - ST730715,716,717
- APPLICABLE WIRE SEAL : 090 II - MG681114,1115,1116,1119
187 II - MG681367,1370,1371,1372



ISSUE MARK

NO.	PART NO.	PART NAME	MATERIAL	FINISH
1	MG672352	1809 WP 10P REC. HS'G	PBT	BLACK
2	MG672353	1809 WP 10P REC. FRONT HOLDER	PBT	NATURAL
3	P901210	1809 WP 10P INNER SEAL	SILICONE	RED

DR.	HEO.S.H.	02.01.21	CHK.		1/21
CHK.			APP.		1/21

MATERIAL	SEE TABLE	
FINISH	SEE TABLE	
WIRE RANGE		CLASS Y7283-1909
INSULATION		TYPE
TOLERANCE EXCEPT AS NOTED	SEE TABLE	SCALE 1/1
PART NAME	1809 WP 10P REC. ASS'Y	
		PART NO. MG642351