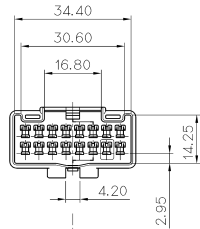
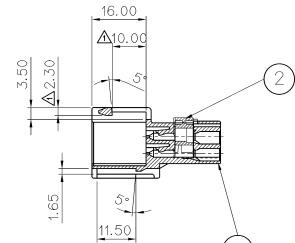
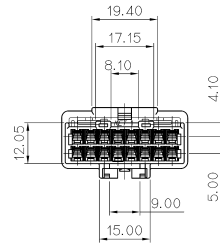
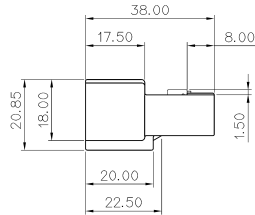
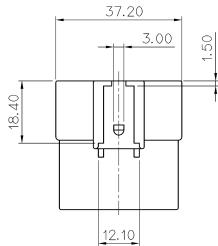


AA



AA



SECTION AA-AA

주 기

1. 적용 HOUSING : MG653198
2. 적용 TERMINAL : ST740672, 673, 674
3. 가능상 유해한 BURR 및 WELDLINE등이 없을것.
4. SPACER는 본 도면과 같이 1차 LOCK'G 상태로 유지, 공급할것.

GENERAL TOLERANCE (HOUSING)							USED ON
10 MAX	50 MAX	100 MAX	250 MAX	250 VR	ANGLE	ECCENT	
±0.2	±0.3	±0.55	±0.95	±1.4	±30'	0.1	

NO	ASS'Y NO.	PART NO.	PART NAME	MATERIAL	FINISH
1	MG643315	MG673316	ASC II 16M HOUSING	PBT	NATURAL
2		MG673317	ASC II 16M SPACER		YELLOW

NOTE

1. MATING PART NO. : MG653198
2. APPLICABLE TERMINAL NO. : ST740672, 673, 674
3. MUST BE FREE OF BURR, WELDLINE AND IMPERFECTION THAT AFFECT FUNCTION.
4. THE MOLD DRAWING IN THE SAME WAY, SPACER IS IN NORMAL CONDITION MAINTENANCE AND SUPPLY WITH FIRST LOCKING.



ISSUE MARK

MATERIAL	SEE TABLE		KOREA ELECTRIC TERMINAL CO., LTD.
FINISH	SEE TABLE		
WIRE RANGE		CLASS	ASC II
INSULATION		TYPE	090
LTR REVISION RECORD DR. KDJ '04.11.09.	SHIN C.H. 04.11.29 DR. CHA.	PART NO. MG643315	
DR. KDJ '04.11.09. CHK.	APP.	SCALE 1/1	PART NAME ASC II 16M HOUSING ASSY