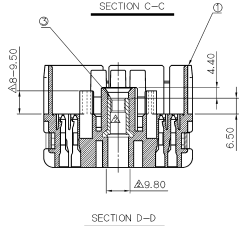
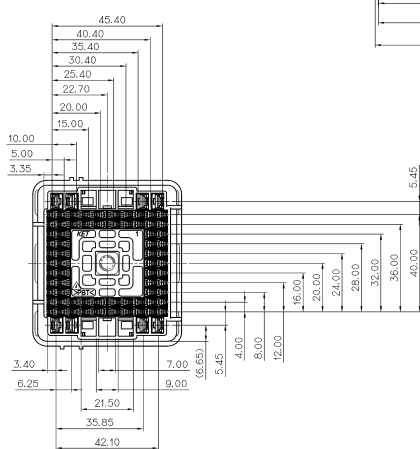
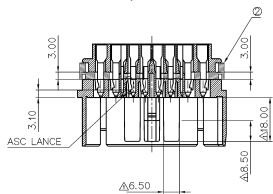
DETAIL "E"
(S=5/1)

GENERAL TOLERANCE (HOUSING)							USED ON
10MAX	50MAX	100MAX	250MAX	250VR	ANGLE	ECCENT	
±0.2	±0.3	±0.55	±0.95	±1.4	±30'	0.1	

NO.	PART NO.	PART NAME	MATERIAL	FINISH
1	MG673616	HYBRID 76M HOUSING		NATURAL
2	MG673617	HYBRID 76M SPACER	PBT	GRAY
3	R602058	HYBRID 76M NUT(INSERT)	SWCH25F	PZn5-C

주 기

- 지시없는 R는 전부 0.3 인치 한다.
- 기능상 유해한 BURR, 변형등이 없도록.
- 적용 TERMINAL(ASC) : ST740672, 673, 674
적용 TERMINAL(187II) : ST740631, 632, 633
SMT HOUSING : MG653612
적용 BOX : MG633609, MG633610
- 제품내 함유된 6대 유해물질 (납,수은,카드뮴,6가브롬, PBBs,PBDEs)은 EU ELV 지침 및 RoHS 법규에서 지정한 최대 허용 농도를 초과해서는 안된다.

NOTE

- UNLESS OTHERWISE SPECIFIED ALL RADIUS TO BE 0.3 RADIUS.
- MUST BE FREE OF BURR, WELDLINE AND IMPERFECTION THAT AFFECT FUNCTION.
- APPLICABLE TERMINAL(ASC) : ST740672, 673, 674
APPLICABLE TERMINAL(187II) : ST740631, 632, 633
MATCHING HOUSING : MG653612
APPLICABLE BOX : MG633609, MG633610
- HAZARDOUS SUBSTANCES IN PARTS (LEAD, MERCURY, CADMIUM, HEXAVALENT CHROMIUM, PBBs, PBDEs) SHALL NOT EXCEED THE MAXIMUM PERMISSIBLE CONCENTRATION PRESCRIBED UNDER EU ELV DIRECTIVE & RoHS REGULATION.



ISSUE MARK

Korea Electric

TERMINAL CO., LTD.

2008.04.18

Korea Electric

REV.	DESCRIPTION	DATE	BY	CHK.	APP.	MATERIAL	SEE TABLE
1	INITIAL RELEASE	2008.04.18				FINISH	SEE TABLE
2	REVISED	2008.04.18				RISK RANCE	SEE TABLE
3	REVISED	2008.04.18				CLASS	
4	REVISED	2008.04.18				INSULATION	
5	REVISED	2008.04.18				TYPE	
6	REVISED	2008.04.18				SCALE	1/1
7	REVISED	2008.04.18				PART NO.	MG643615
8	REVISED	2008.04.18				PART NAME	HYBRID 76M ASSY