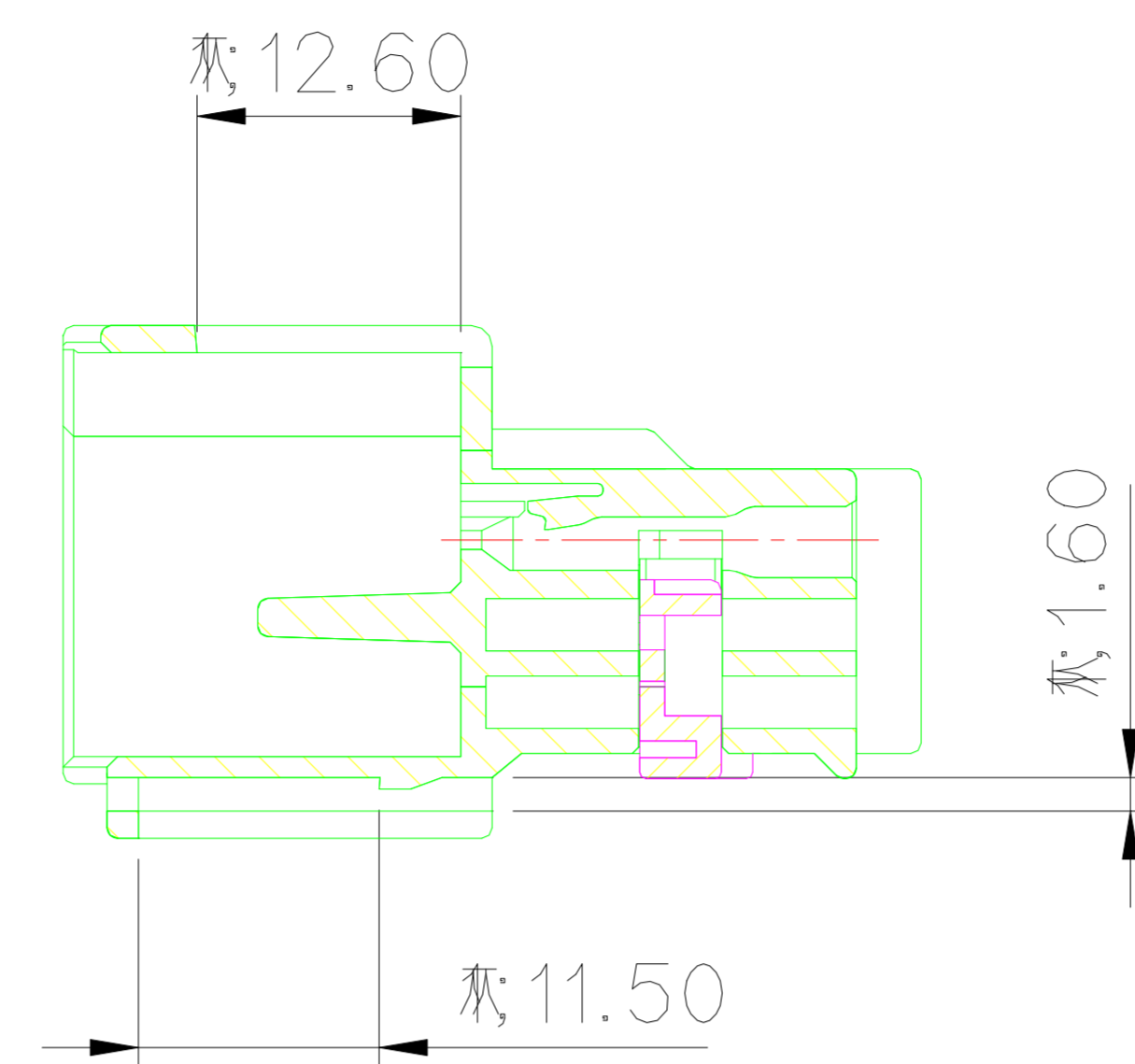
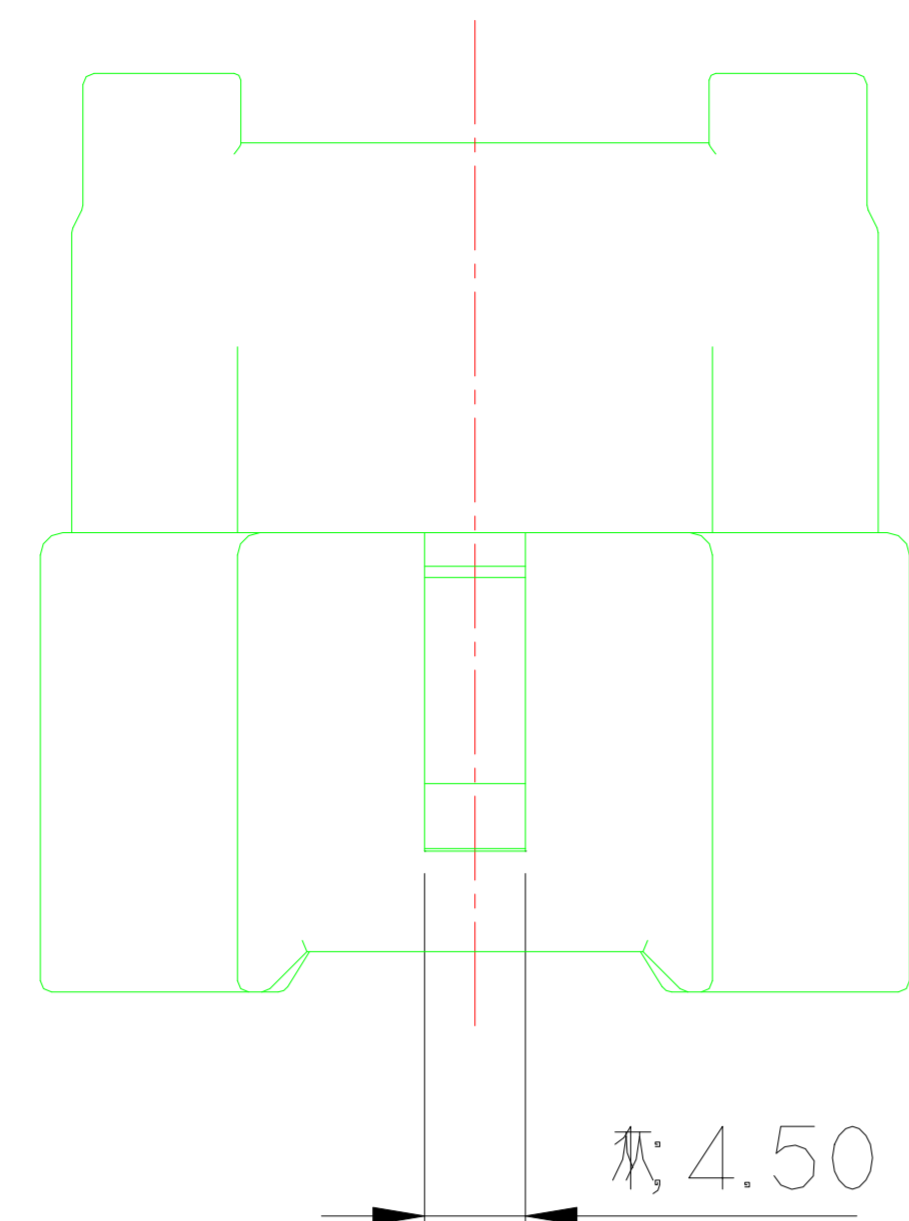


NO.	PART NO.	PART NAME	MATERIAL	COLOR
①	MG675344	060110 10M HOUSING	SEE TABLE	SEE TABLE
②	MG675345	060110 10M SPACER	PBT	L/GRAY

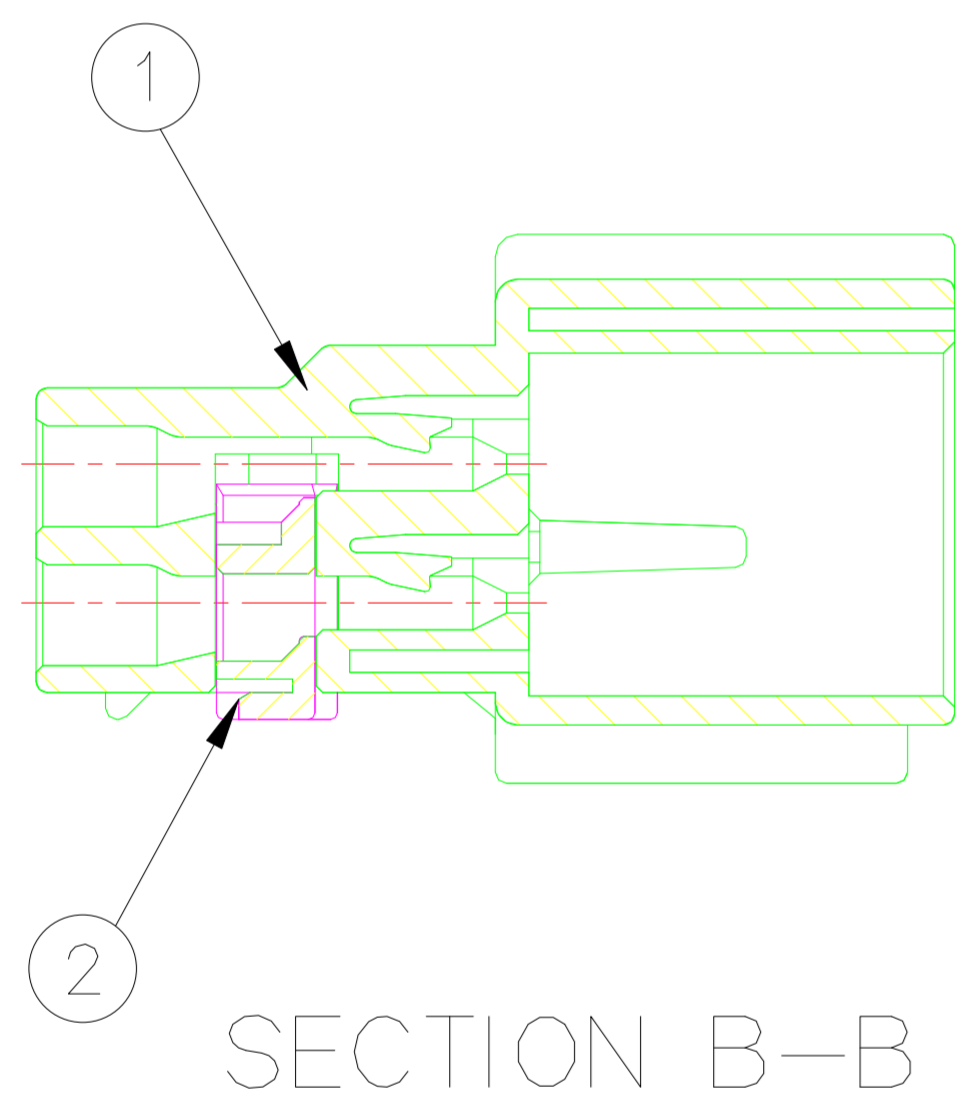
GENERAL TOLERANCE (HOUSING)							USED ON
10MAX	50MAX	100MAX	250MAX	250VR	ANGLE	ECCENT	
±0.2	±0.3	±0.55	±0.95	±1.4	±30'	0.1	

NOTE

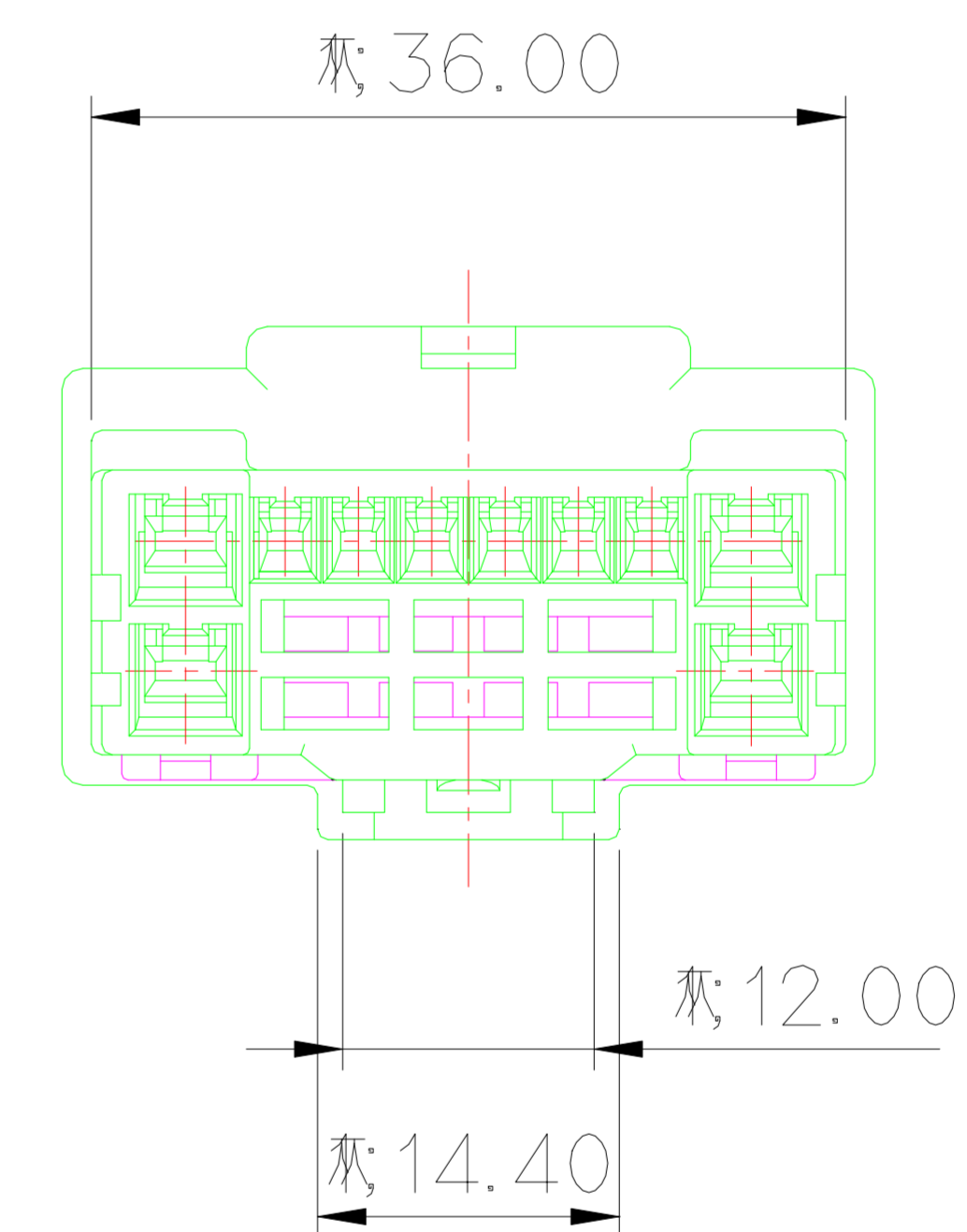
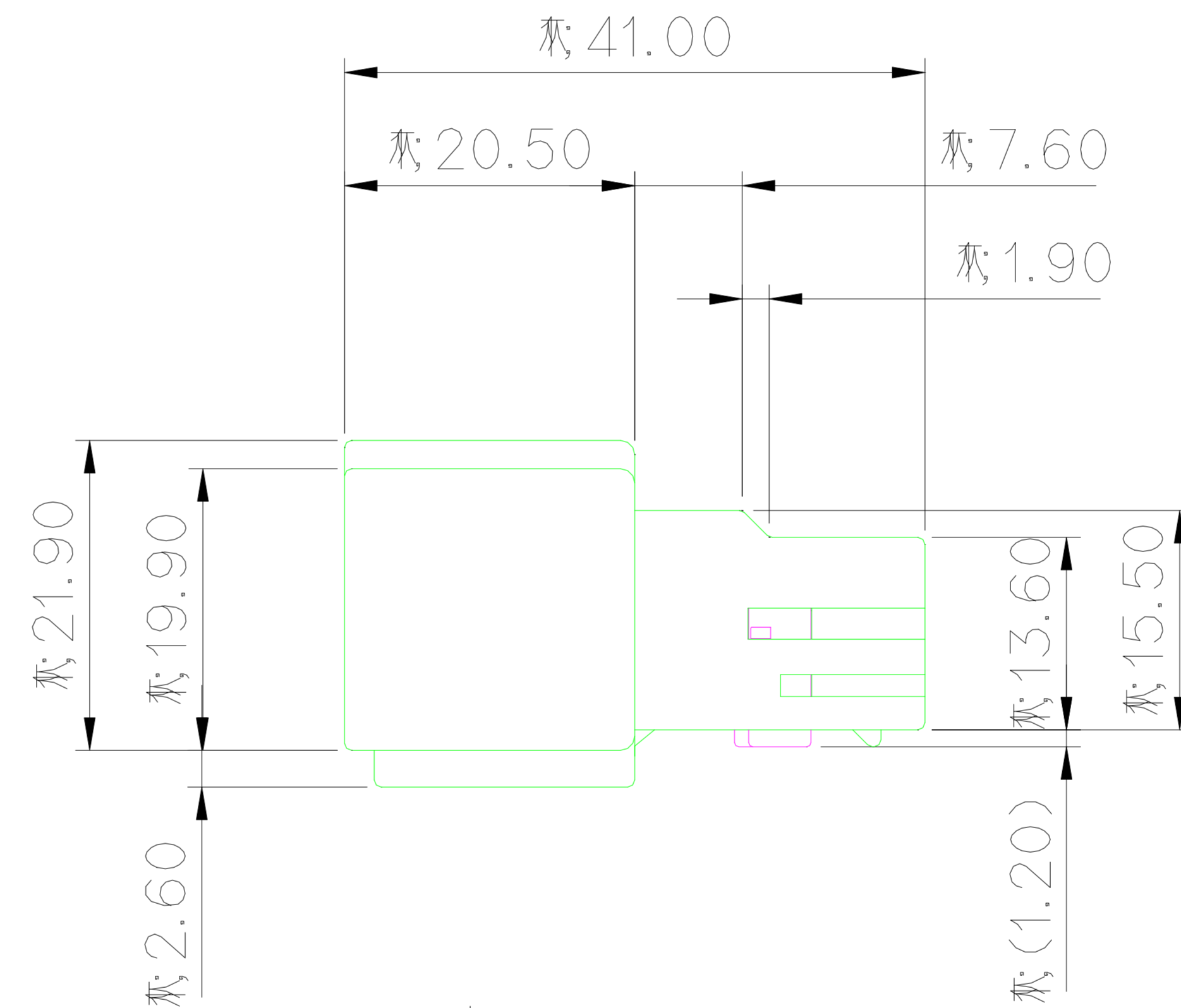
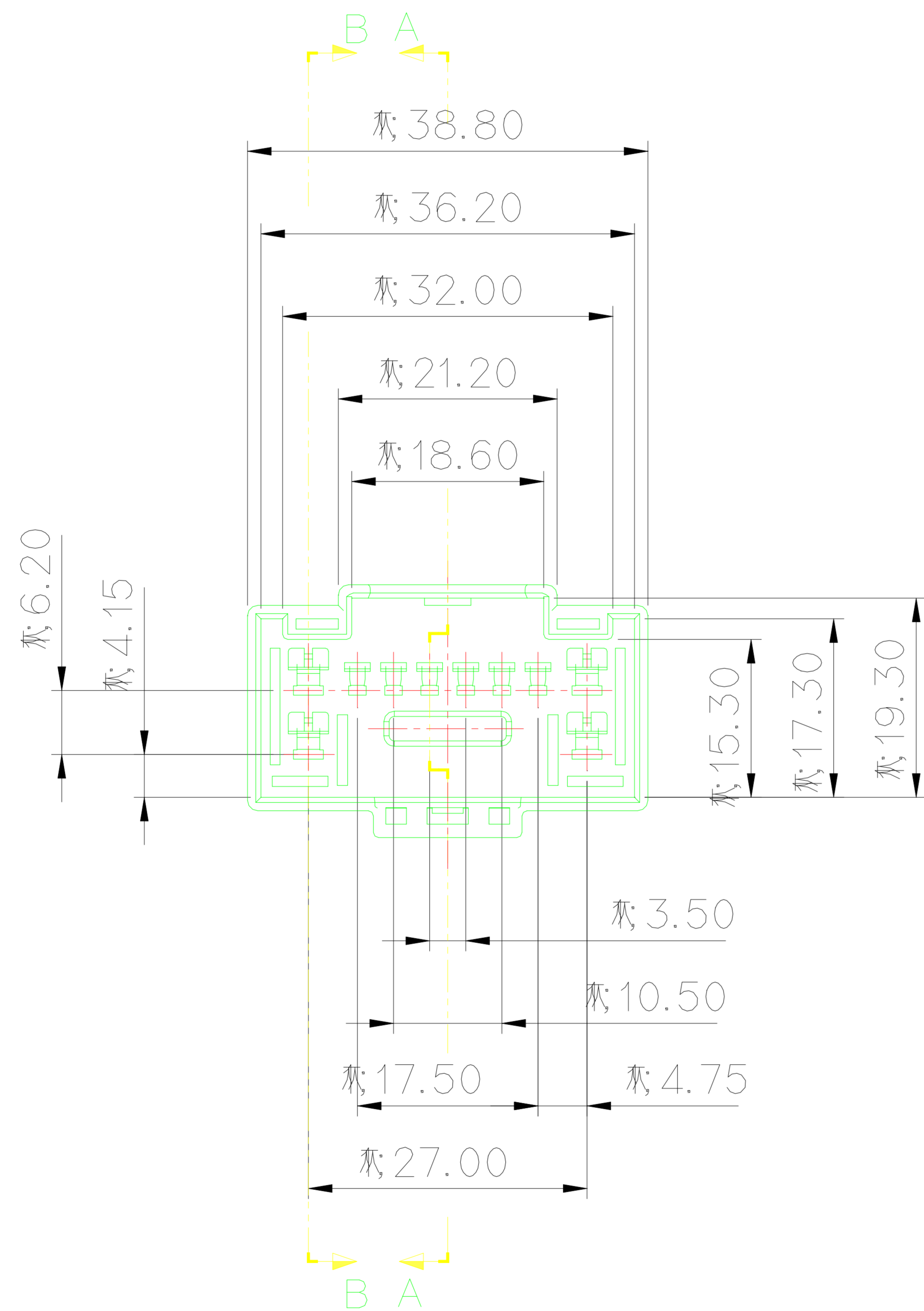
- MUST BE FREE OF BURR, WELDLINE AND IMPERFECTION THAT AFFECT FUNCTION.
- APPLICABLE HOUSING : MG655203
- APPLICABLE TERMINAL (060) : ST741270, 741271, 741272
APPLICABLE TERMINAL (110) : ST741285, 741286, 741287
APPLICABLE CLIP : MG631471,2019,1267,1929,1268,3815,3862,3870,2970
- THE MOLD DRAWING IN THE SAME WAY, SPACER IS NORMAL CONDITION MAINTENANCE AND SUPPLY WITH FIRST LOCKING.
- 6 HAZARDOUS SUBSTANCES IN PARTS (LEAD MERCURY,CADMIUM,HEXAVALENT CHROMIUM, PPBs,PPDEs) SHALL NOT EXCEED THE MAXIMUM PERMISSIBLE CONCENTRATION PRESCRIBED UNDER EU ELV DIRECTIVE & RoHS REGULATION.



SECTION A-A



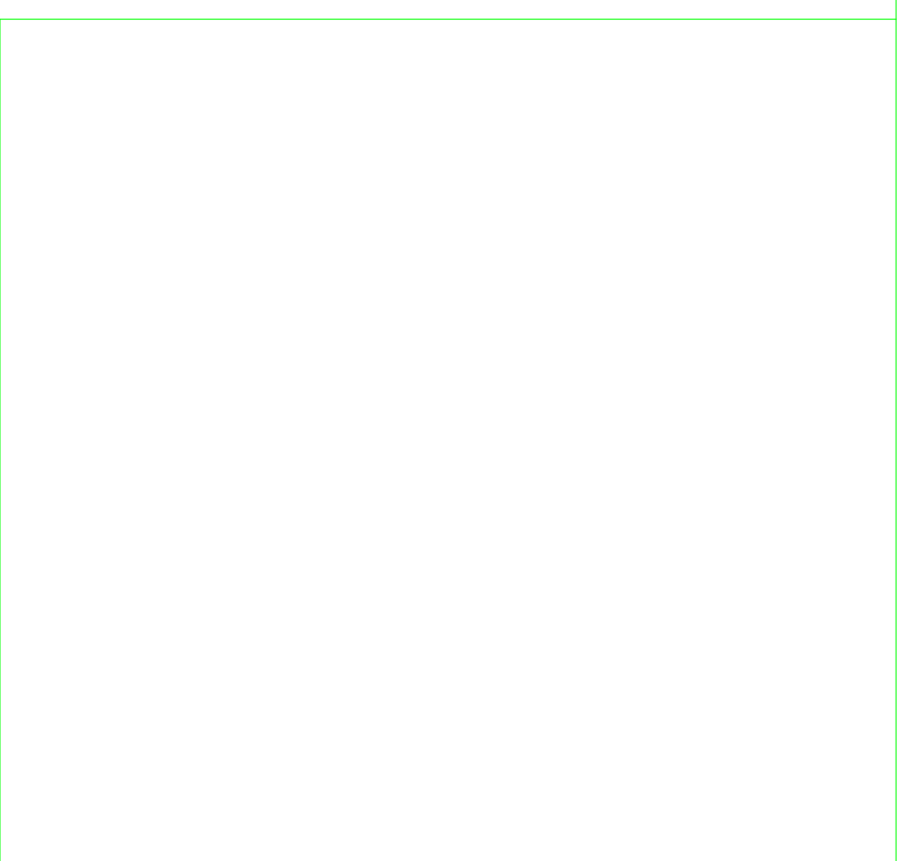
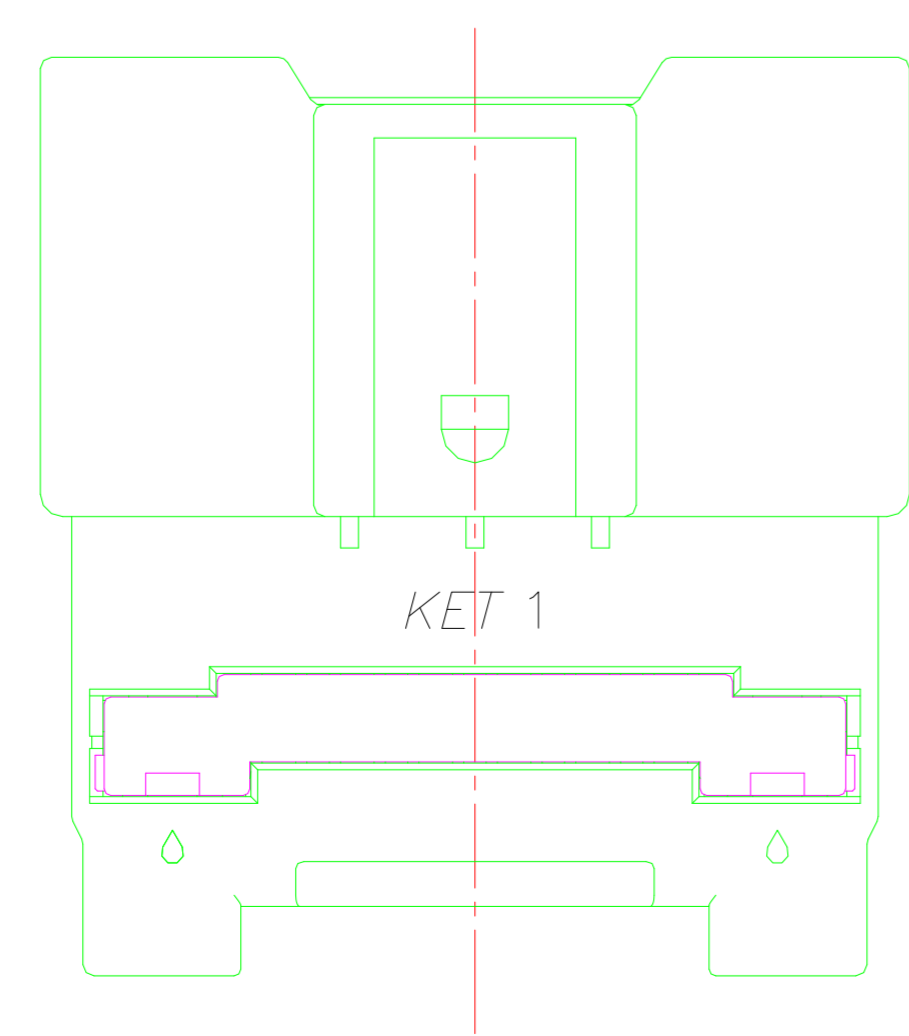
SECTION B-B



주 기

- 기능상 유해한 BURR 및 WELDLINE등이 없을 것.
- 적용 HOUSING : MG655203
- 적용 TERMINAL (060) : ST741270, 741271, 741272
적용 TERMINAL (110) : ST741285, 741286, 741287
적용 CLIP : MG631471,2019,1267,1929,1268,3815,3862,3870,2970
- SPACER는 본 도면과 같이 1차 LOCK'G 상태로 유지, 공급할것.
- 제품내 함유된 6대 유해물질 (납,수은,카드뮴,6가크롬, PBBs,PBDEs)은 EU ELV 지침 및 RoHS 법규에서 지정한 최대 허용 농도를 초과해서는 안된다.

NO.	MATERIAL	COLOR
* 0	P B T	NATURAL
1		RED
2		BLUE
20		JADE
3		YELLOW
4		GRAY
40		DARK GRAY
41		LIGHT GRAY
5		BLACK
6		DARK GREEN
7		BROWN
8	LIGHT GREEN	
9	MAGENTA	
11	ORANGE	



ISSUE MARK

MATERIAL	SEE TABLE	KET KOREA ELECTRIC TERMINAL CO., LTD.						
FINISH	SEE TABLE							
WIRE RANGE		CLASS HYBRID						
INSULATION		TYPE .060110						
LTR	REVISION RECORD	DR.	CHK.	APP.	DATE	TOLERANCE EXCEPT AS NOTED	SCALE 1/1	PART NO. MG645346
DR.	YSW '10.09.06	CHK.				SEE TABLE		
CHK.		APP.				PART NAME	060110 10M HOUSING ASSY	