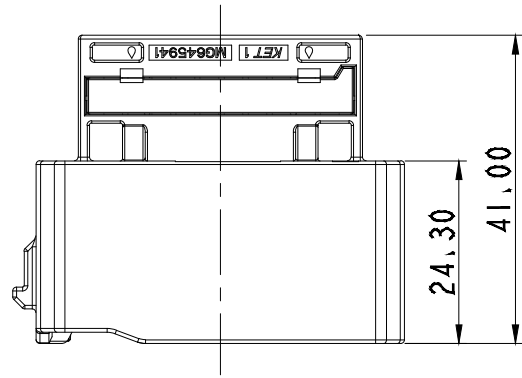


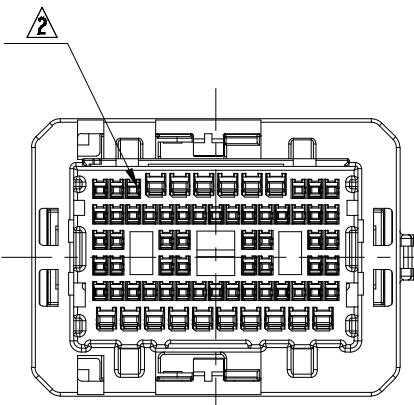
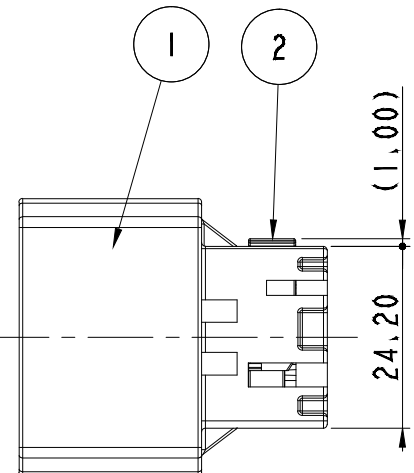
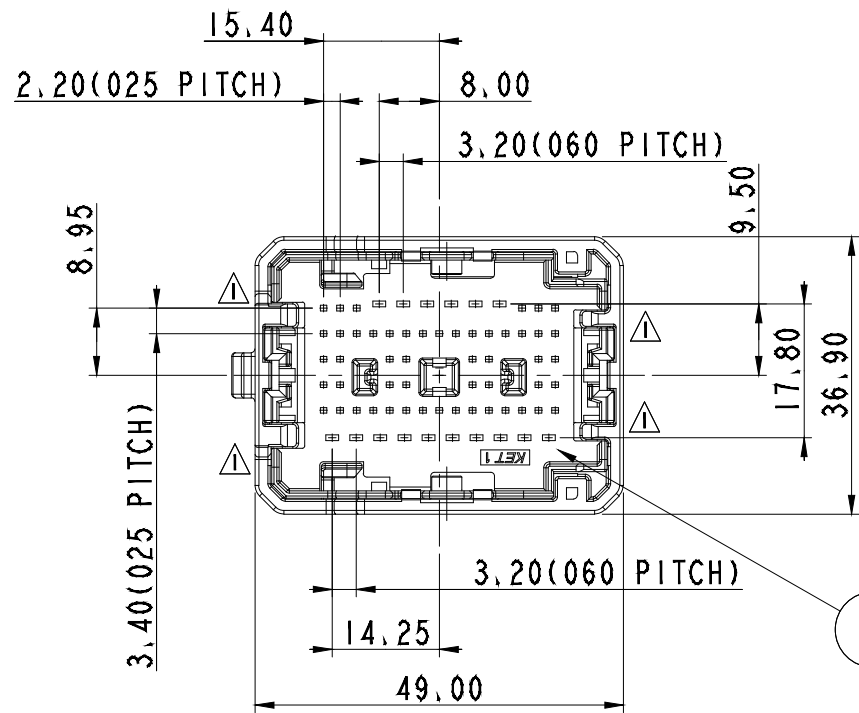
ISO VIEW



GENERAL TOLERANCE (HOUSING)

10 MAX	30 MAX	50 MAX	70 MAX	100 MAX	120 MAX	250 MAX	250 VR	ANGLE	ECCENT	USED ON
±0.15	±0.2	±0.3	±0.4	±0.5	±0.75	±0.9	±1.4	±30'	0.1	

NO.	PART NAME	PART NO.	MATERIAL	COLOR	QTY.
1	025060 68M HOUSING	MG676481	SEE TABLE	SEE TABLE	1
2	025060 68M SPACER	MG676483-41	PBT	L/GRAY	1
3	025060 68M PLATE	MG676482-5	POM	BLACK	1



NO.	MATERIAL	COLOR
0	P B T	NATURAL
1		RED
2		BLUE
20		JADE
3		YELLOW
4		GRAY
40		DARK GRAY
41		LIGHT GRAY
5		BLACK
6		GREEN
7		BROWN
8	LIGHT GREEN	
9	MAGENTA	
11	ORANGE	

NOTE

- MUST BE FREE OF FLASH, WELDLINE AND IMPERFECTION THAT AFFECT FUNCTION.
- APPLICABLE TERMINAL (C025) : ST741360-3, 1361-3, 1360-G, 1361-G
APPLICABLE TERMINAL (C060) : ST741362-3, 1363-3, 1364-3
APPLICABLE CONNECTOR : MG656799, 3 MG657202
- 6 HAZARDOUS SUBSTANCES IN PARTS (LEAD, MERCURY, CADMIUM, HEXAVALENT CHROMIUM, PBBs, PBDEs) SHALL NOT EXCEED THE MAXIMUM PERMISSIBLE CONCENTRATION PRESCRIBED UNDER EU ELV DIRECTIVE & RoHS REGULATION.

주 기

- 기능상 유해한 BURR 및 WELDLINE 등이 없을 것.
- 적용 TERMINAL (C025) : ST741360-3, 1361-3, 1360-G, 1361-G
적용 TERMINAL (C060) : ST741362-3, 1363-3, 1364-3
적용 CONNECTOR : MG656799, 3 MG657202
- 제품내 함유된 6대 유해물질 (납, 수은, 카드뮴, 6가크롬, PBBs, PBDEs)은 EU ELV 지침 및 RoHS 법규에서 지정한 최대 허용 농도를 초과해서는 안된다.

APPROVED

2021-01-07

KOREA ELECTRIC
TERMINAL CO., LTD.
Korea Electric Te
rminal Co., LTD.

ISSUE MARK

				MATERIAL	SEE TABLE		KOREA ELECTRIC TERMINAL CO., LTD.		
				FINISH	SEE TABLE		CLASS	HYBRID	
	ECO-2006-344 근거 도면 제작성 (제품 상세의 표본 유지)	SYS	WDH	CMS	20.06.29	WIRE RANGE	-	TYPE	025060
	025 신규 단말용역에 적용 (ECO-1912-361 근거 도면 제작성)	KJH	HYJ	CJH	19.12.27	INSULATION	-	PART NO.	MG645941
	카메라 제품 시 호기 삽입용 적용 (ECO-1606-141 근거 도면 제작성)	AYT	LIM	SUK	16.06.13	TOLERANCE EXCEPT AS NOTED	SEE TABLE	SCALE	1/1
LTR	REVISION RECORD	DR.	CHK.	APP.	DATE	PART_NAME			
	DR, WDH 2015.07.28		CHK, KMH 2015.07.28			025060 68M ASSY			
	CHK,		APP, BIN 2015.07.28						