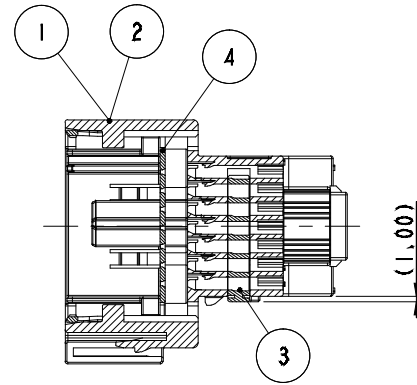
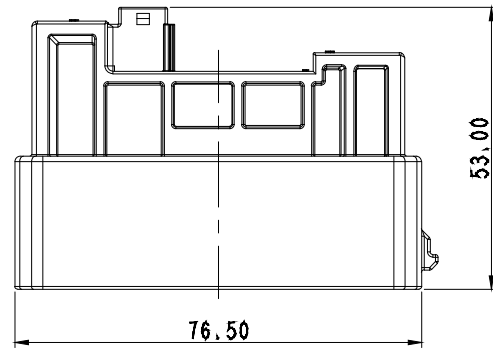
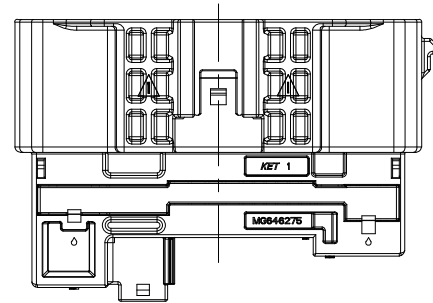
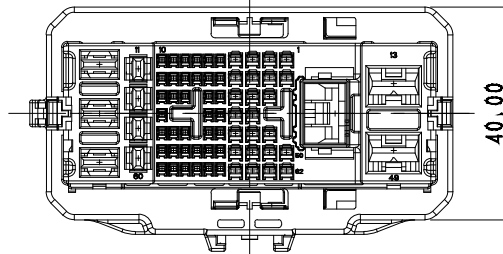
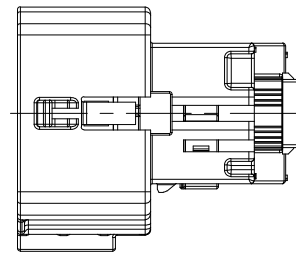
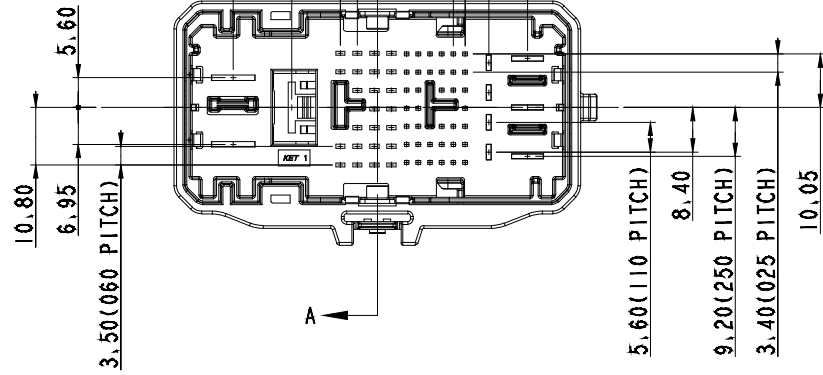
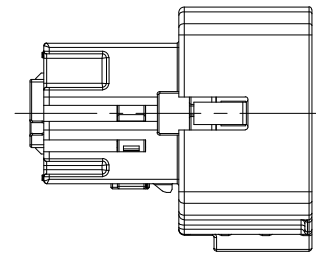
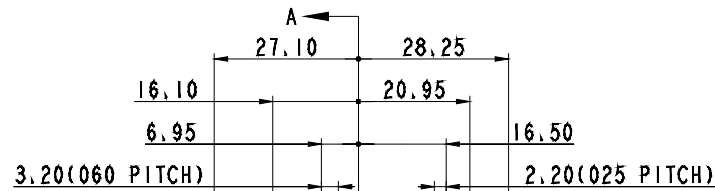


ISO VIEW



SECTION A-A



GENERAL TOLERANCE (HOUSING)										USED ON
10 MAX	30 MAX	50 MAX	70 MAX	100 MAX	120 MAX	250 MAX	250 VR	ANGLE	ECCENT	
±0.15	±0.2	±0.3	±0.4	±0.5	±0.75	±0.9	±1.4	±30'	0.1	

NO.	MATERIAL	COLOR
* 0	PBT	NATURAL
1		RED
* 2		BLUE
20		JADE
3		YELLOW
4		GRAY
40		DARK GRAY
41		LIGHT GRAY
5		BLACK
6		DARK GREEN
7		BROWN
8	LIGHT GREEN	
9	MAGENTA	
11	ORANGE	

- 주 기
- 가능상 유해한 BURR 및 WELDLINE 등이 없을 것.
 - 적용 TERMINAL(C025) : ST741360-3, ST741361-3, ST741360-G, ST741361-G
 적용 TERMINAL(C060) : ST741362-3, ST741363-3, ST741364-3
 적용 TERMINAL(N110) : ST741367-3, ST741368-3, ST741369-3
 적용 TERMINAL(N250) : ST741370-3, ST741371-3, ST741372-3
 적용 TERMINAL(312) : ST740600-3, ST740601-3
 적용 TERMINAL(375) : ST740538-3, ST740539-3
 적용 CONNECTOR : MG657058
 적용 375 REAR HOLDER : MG630661
 - 제품내 함유된 6대 유해물질 (납, 수은, 카드뮴, 6가크롬, PBBs, PBDEs)은 EU ELV 지침 및 RoHS 법규에서 지정한 최대 허용 농도를 초과해서는 안된다.

- NOTE
- MUST BE FREE OF BURR, WELDLINE AND IMPERFECTION THAT AFFECT FUNCTION.
 - APPLICABLE TERMINAL(C025) : ST741360-3, 1361-3, 1360-G, 1361-G
 APPLICABLE TERMINAL(C060) : ST741362-3, 1363-3, 1364-3
 APPLICABLE TERMINAL(N110) : ST741367-3, 1368-3, 1369-3
 APPLICABLE TERMINAL(N250) : ST741370-3, ST741371-3, ST741372-3
 APPLICABLE TERMINAL(312) : ST740600-3, ST740601-3
 APPLICABLE TERMINAL(375) : ST740538-3, ST740539-3
 APPLICABLE CONNECTOR : MG657058
 APPLICABLE 375 REAR HOLDER : MG630661
 - 6 HAZARDOUS SUBSTANCES IN PARTS (LEAD, MERCURY, CADMIUM, HEXAVALENT CHROMIUM, PBBs, PBDEs) SHALL NOT EXCEED THE MAXIMUM PERMISSIBLE CONCENTRATION PRESCRIBED UNDER EU ELV DIRECTIVE & RoHS REGULATION.

PART LIST

NO.	PART NAME	PART NO.	MATERIAL	COLOR	QTY.	QTY.
1	025060110250312375 71M HSG (RH)	MG677354	SEE TABLE	NATURAL	1	-
2	025060110250312375 71M HSG (LH)	MG677355		BLUE	-	1
3	025060110250312375 71M SPACER	MG677356	PBT	LIGHT GRAY	1	1
4	025060110250312375 71M PLATE	MG677357	POM	BLACK	1	1

구분	MG646275	MG646276
PART NO.	MG646275	MG646276
PART NAME	025060110250312375 71M ASSY (RH)	025060110250312375 71M ASSY (LH)
COLOR	NATURAL	BLUE

APPROVED

2021-04-02

KOREA ELECTRIC
TERMINAL CO., LTD.
Korea Electric Te
rminal Co., LTD.

ISSUE MARK

MATERIAL	SEE TABLE	KIEP KOREA ELECTRIC TERMINAL CO., LTD.
FINISH	SEE TABLE	
WIRE RANGE		CLASS 025/060/110/250/312/375
INSULATION		TYPE
SEE TABLE	SCALE 1/1	PART NO. SEE TABLE
PART-NAME	025060110250312375 71M ASSY (RH)	