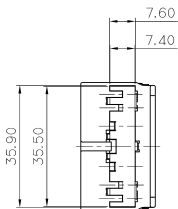
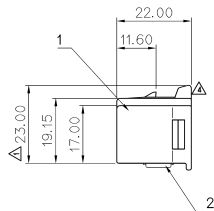
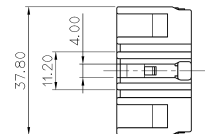
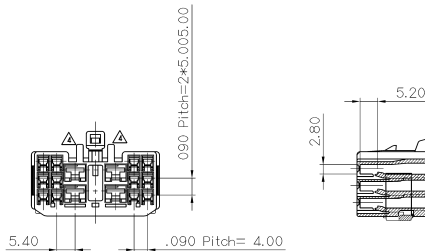


SECTION A-A



| GENERAL TOLERANCE (HOUSING) | | | | | | | USED ON |
|-----------------------------|--------|---------|---------|--------|-------|--------|---------|
| 10 MAX | 50 MAX | 100 MAX | 250 MAX | 250 VR | ANGLE | ECCENT | |
| ±0.2 | ±0.3 | ±0.55 | ±0.95 | ±1.4 | ±30' | 0.1 | |

| NO. | PART NO. | PART NAME | MATERIAL | REMARK |
|-----|----------|------------------|----------|---------|
| 1 | MG670996 | 1809 16F HOUSING | PBT | NATURAL |
| 2 | MG671004 | 1809 16F SPACER | PBT | NATURAL |



SECTION B-B

NOTE

1. 제품기능상 유해한 BURR, 변형 및 WELDLINE 등이 없을것.
2. 적용 TERMINAL: ST730644, 645, 646(.187 TYPE: 4EA)
ST730675, 676, 677 (.090 TYPE : 12 EA)
3. 적용 HOUSING: MG641007
4. SPACER는 본 도면과 같이 1차 LOCK'G상태로 유지, 공급할 것.



ISSUE MARK

| | | | | | | | |
|---|-----------------|------|---------------|---------------------------------|-----------------------|---|----------|
| △ 설계사양서(S050509)에서 사용 용도명 LOCK LIVER를 포함해서 OUTLINE용도명(작성) △ 사양명(S050504)과 일치 LOCK LIVER, 용도명(작성) OUTLINE용도명(작성) △ 사양명(S050509)과 일치 용도명 △ 사양명(S020044)과 일치 유형 | LDG | % | 06.03.17 | MATERIAL | SEE TABLE | KET KOREA ELECTRIC TERMINAL CO., LTD. | |
| | KDU | mm | 05.06.20 | FINISH | SEE TABLE | | |
| △ 사양명(S050509)과 일치 용도명 △ 사양명(S020044)과 일치 유형 | KDU | mm | 05.01.18 | WIRE RANGE | | CLASS | |
| | KVM | % | 02.04.09 | INSULATION | | TYPE | |
| LTR | REVISION RECORD | DR | CHK APP. DATE | TOLERANCE EXCEPT AS NOTED | ±0.20 | SCALE | PART NO. |
| DR | YUN '96.01.15 | CHK | | | | 1/1 | MG651006 |
| CHK | 최노준 3.13 | APP. | 3.10 | PART NAME | 1809 16F HOUSING ASSY | | |