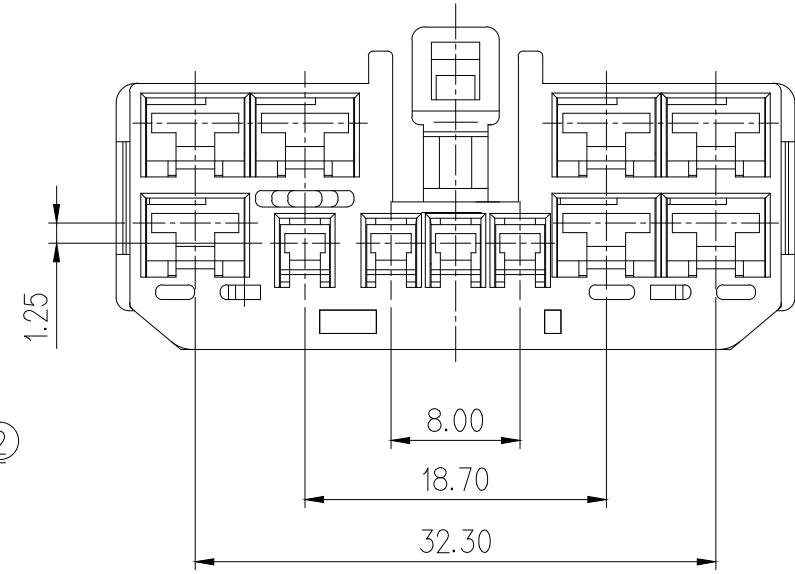
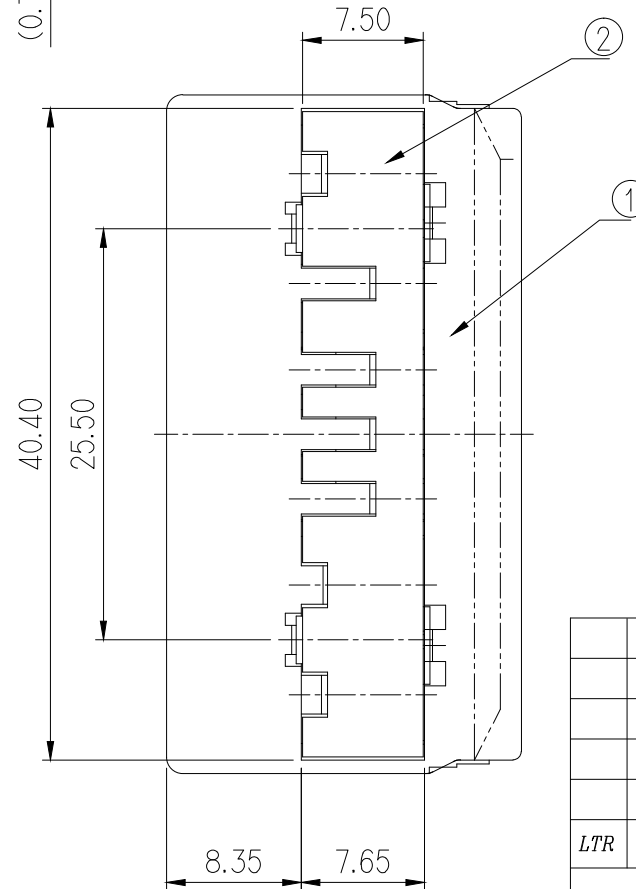
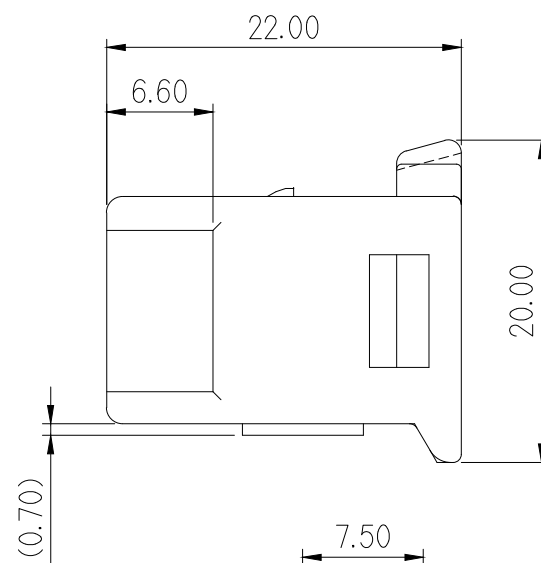
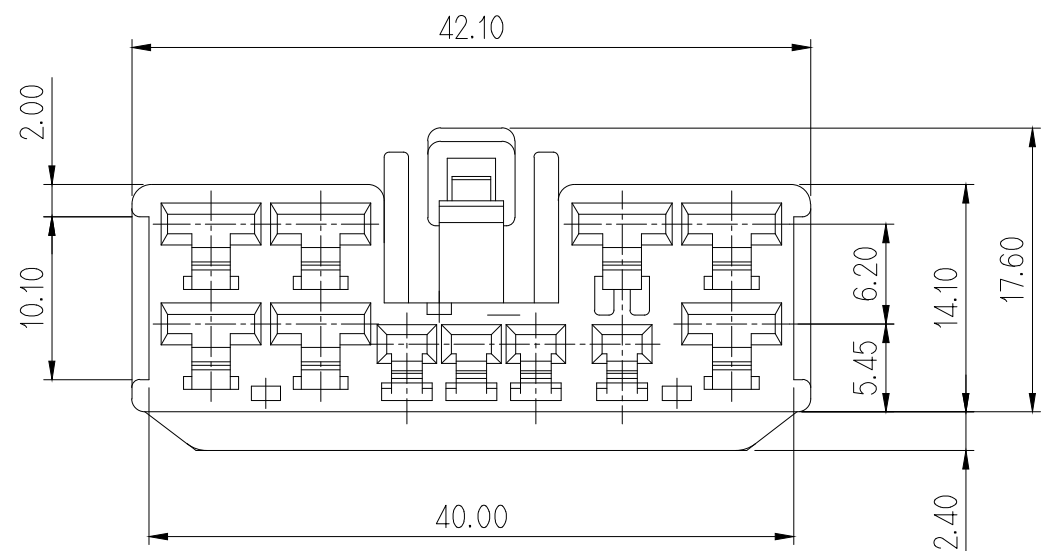
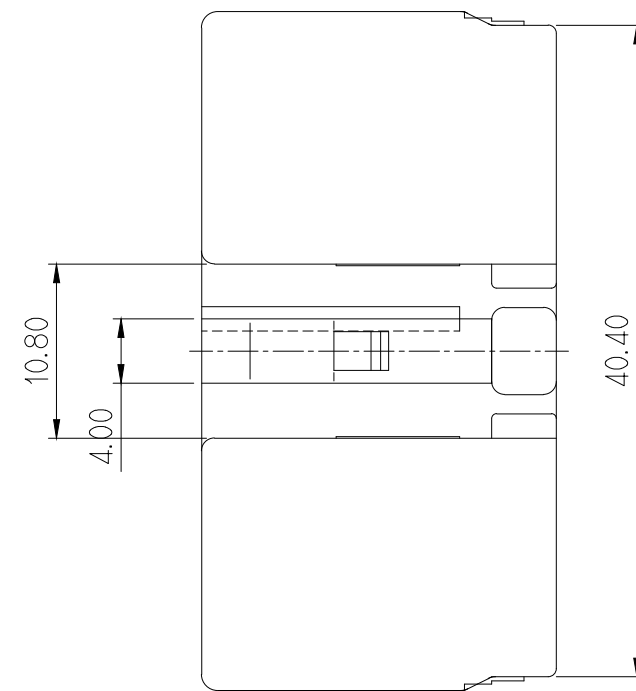


주 기

- 기능상 유해한 BURR 및 WELDLINE 등이 없을 것.
- 적용 TERMINAL: ST730675, 676, 677(.090 II)
적용 TERMINAL: ST730644, 645, 646(.187 II)
- 제품내 함유된 6대 유해물질 (납, 수은, 카드뮴, 6가 크롬, PBBs, PBDEs)은 EU ELV 지침 및 RoHS 법규에서 지정한 최대 허용 농도를 초과해서는 안 된다.



GENERAL TOLERANCE (HOUSING)							USED ON
10 MAX	50 MAX	100 MAX	250 MAX	250 VR	ANGLE	ECCENT	
±0.2	±0.3	±0.55	±0.95	±1.4	±30'	0.1	

NO.	PART NO.	PART NAME	MATERIAL	FINISH
1	MG672718	1809 11P PLUG HS'G	PBT	NATURAL
2	MG671916	1809 11P PLUG SPACER	PBT	NATURAL

NOTE

- MUST BE FREE OF FLASH, SINK AND IMPERFECTION THAT AFFECT FUNCTION.
- APPLICABLE TERMINAL :ST730675, 676, 677(.090 II)
APPLICABLE TERMINAL :ST730644, 645, 646(.187 II)
- 6 HAZARDOUS SUBSTANCES IN PARTS (LEAD, MERCURY, CADMIUM, HEXAVALENT CHROMIUM, PBDEs) SHALL NOT EXCEED THE MAXIMUM PERMISSIBLE CONCENTRATION PRESCRIBED UNDER EU ELV DIRECTIVE.

APPROVED
2018-12-11
KOREA ELECTRIC
TERMINAL CO., LTD.
Korea Electric Terminal Co., LTD.

ISSUE MARK

		MATERIAL		SEE TABLE		KOREA ELECTRIC TERMINAL CO., LTD.	
		FINISH		SEE TABLE		CLASS .090 II + 187 II	
		WIRE RANGE			TYPE		
		INSULATION			PART NO. MG652719		
LTR	REVISION RECORD	DR.	CHK.	APP.	DATE	TOLERANCE EXCEPT AS NOTED	SCALE 2/1
DR.	KYM 02.08.02	CHK.	KKJ		8/3	PART NAME 1809 11P PLUG HS'G(187(7)+090(4)) (J/B I/O CONN'T용)	
CHK.		APP.	JANG		8/3		