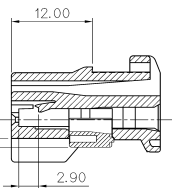
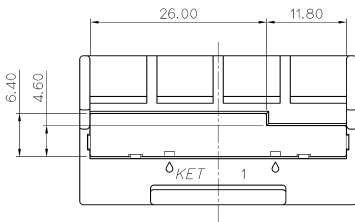
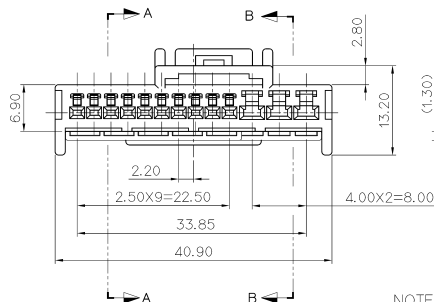
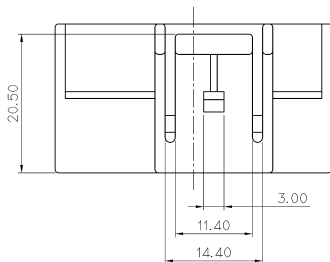
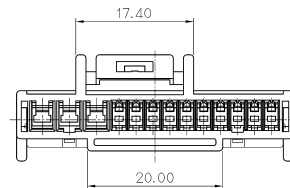


SECTION A-A (040111)



SECTION B-B (09011)



GENERAL TOLERANCE (HOUSING)							USED ON
10MAX	50MAX	100MAX	250MAX	250VR	ANGLE	ECCENT	
±0.2	±0.3	±0.55	±0.95	±1.4	±30'	0.1	

주 기

- 가능상 유해한 BURR 및 WELDLINE 등이 없을것.
- 적용 TERMINAL : ST730770-3, ST730960(040111)
ST730675-3,676-3,677-3(09011)
- 제품내 함유된 6대 유해물질 (납, 수은, 카드뮴, 6가크롬, PBBs, PBDEs)은 EU ELV 지침 및 RoHS 법규에서 지정한 최대 허용 농도를 초과해서는 안된다.

NOTE

- MUST BE FREE OF FLASH, SINK AND IMPERFECTION THAT AFFECT FUNCTION.
- APPLICABLE TERMINAL : ST730770, ST730960(040111)
ST730675-3,676-3,677-3(09011)
- 6 HAZARDOUS SUBSTANCES IN PARTS (LEAD, MERCURY, CADMIUM, HEXAVALENT CHROMIUM, PBBs, PBDEs) SHALL NOT EXCEED THE MAXIMUM PERMISSIBLE CONCENTRATION PRESCRIBED UNDER EU ELV DIRECTIVE & RoHS REGULATION.



ISSUE MARK

NO.	PART NO.	PART NAME	MATERIAL	COLOR
①	MG674123	0409 HYBRID 13F HOUSING (RHD)	PBT	BLACK
②	MG674124	0409 HYBRID 13F SPACER (RHD)	PBT	GRAY

MATERIAL	SEE TABLE		KOREA ELECTRIC TERMINAL CO., LTD.
FINISH	SEE TABLE		
WIRE RANGE		CLASS	0409
INSULATION		TYPE	
LTR	REVISION RECORD	DR	
		CHK	
		APP	
		DATE	
DR	KHS 2007.12.18	CHK	200%
		APP	
		DATE	07.12.18
CHK		APP	
		DATE	07.12.18
PART NAME		SCALES	2/1
0409 HYBRID 13F ASSY (RHD)		PART NO.	MG654121