

- NOTE -
- TOLERANCE: ±0.2, ANGLE ±3°
 - CONPLANARITY: 0.1 MAX
 - PART CODE

MG 6 5 4 8 2 9

PART NO.

PLUG ASS'Y

4. "6 hazardous substances in parts (Lead, Mercury, Cadmium, Hexavalent Chromium, PBBs, PBDEs) shall not exceed the maximum permissible concentration prescribed under EU ELV Directive & RoHS Regulation."

5. No Twist

6. Spec : ES91500-03

7. Solder : Reflow Solder Only(Surface mount)

PIN NO.	A	B	C
30	11.2	16.3	11.2
40	15.2	20.3	15.2
50	19.2	24.3	19.2
60	23.2	28.3	23.2
70	27.2	32.3	27.2
80	31.2	36.3	31.2
90	35.2	40.3	35.2
100	39.2	44.3	39.2
110	43.2	47.3	43.2
120	47.2	51.3	47.2

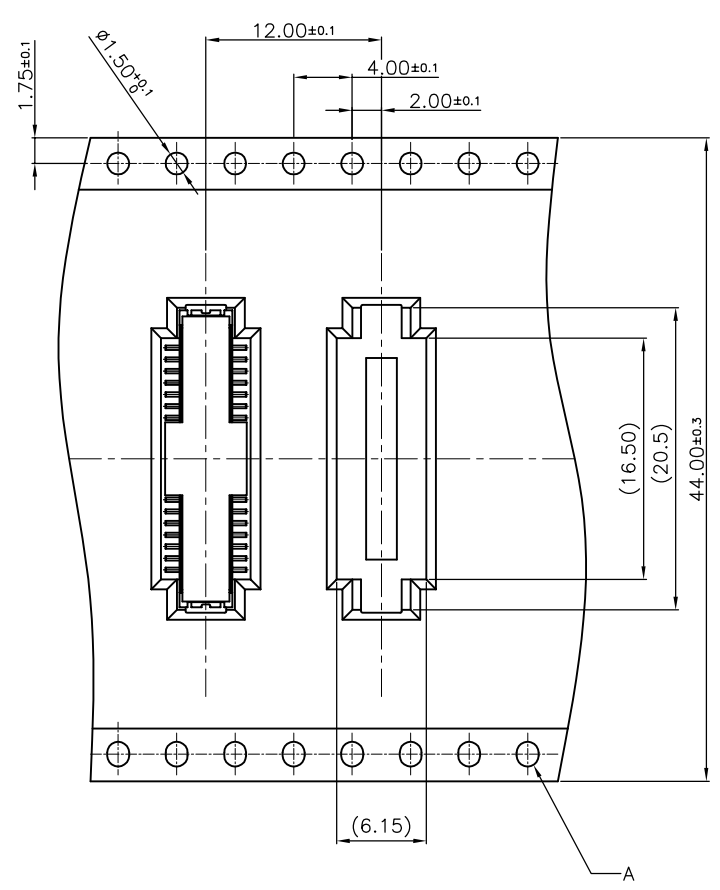
NO.	NAME	MATERIAL	FINISH	Q'TC
4	PLUG HS'G COVER 40P	Polyamide	UL94-V0, BLACK	1
3	METAL-FITTING	Copper Alloy	Ni1.27~3um+Sn2~5um MAX	2
2	PLUG TM'L 40P H9.65	Copper Alloy	Ni1.27~3um+Au 0.1um MAX(Contact) & Au0.03um MIN(Lead)	40
1	PLUG HS'G 40P H9.65	Polyamide	UL94-V0, BLACK	1

MATERIAL	FINISH	WIRE RANGE	INSULATION	SCALE	PART NO.
-	-	-	-	1/1	MG654829

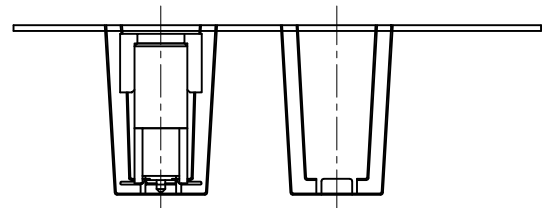
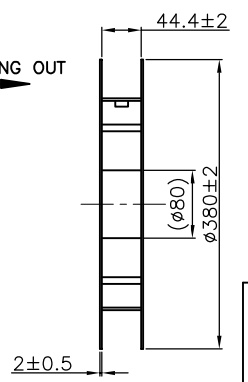
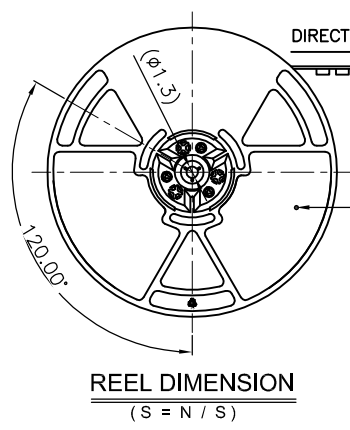
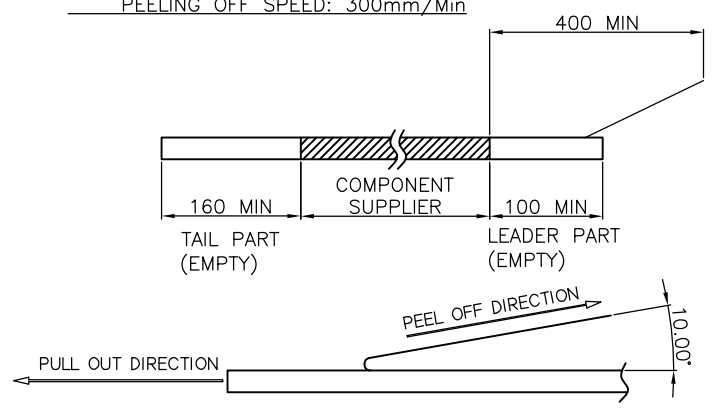
LTR	REVISION RECORD	DR	CHK.	APP.	DATE	TOLERANCE EXCEED AS NOTED	SCALE	PART NO.
		Um.Y.H'	CHK.	B.W.C	09.05.18	-	1/1	MG654829

PART NAME	DESIGN REVISION NO.
B TO B PLUG 40P H9.65 ASS'Y	1

(DIMENSIONS IN MM)



- NOTE -
- NUMBER OF CONNECTOR: 600PCS/REEL
 - LEAD TAPE LENGTH(mm)
 - PEELING OFF FORCE OF TOP TAPE: 0.1N - 0.7N(10.2 - 71.4gf)
 - PEELING OFF SPEED: 300mm/Min



NO.	NAME	MATERIAL	FINISH	PART NO.	Q'TC
4	REEL	PS	BLACK & BLUE	-	1
3	COVER TAPE	PET	-	-	-
2	CARRIER TAPE	PET 0.4t	-	-	-
1	PLUG H9.65 ASS'Y	-	-	MG654829	600

MATERIAL	FINISH	WIRE RANGE	INSULATION	SCALE	PART NO.
-	-	-	-	Non	P300010

LTR	REVISION RECORD	DR	CHK.	APP.	DATE	TOLERANCE EXCEED AS NOTED	SCALE	PART NO.
		Um.Y.H'	CHK.	B.W.C	09'.04.30	±0.3	Non	P300010

PART NAME	DESIGN REVISION NO.
B TO B PLUG 40P H9.65 TAPING PRODUCT	1

(DIMENSIONS IN MM)