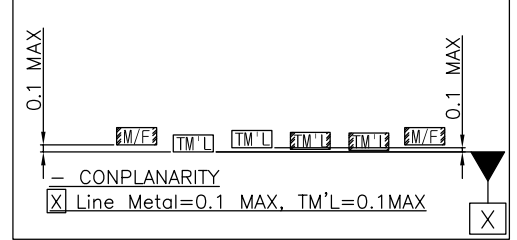


REFERENCE PCB LAYOUT(Tolerance:±0.05)



CONPLANARITY
X Line Metal=0.1 MAX, TM'L=0.1MAX

* NOTE *

1.TOLERANCE : ±0.2 , ANGLE ±3°

2.CONPLANARITY : 0.1 MAX

3.PART CODE

MG 6 5 5 1 7 9

PART NO.
PLUG ASS'Y

4."6 Hazardous substance in parts(Lead,Mercury,Cadmium Hexavalent Chromium,PBBs,PBDEs)shall not exceed the maximum permissible concentration prescribed under EU ELV Directive & RoHS Regulation."

5.No Twist

6.Spec : ES91500-03

7.Solder : Reflow Solder Only(Surface mount)

| PIN NO. | A | B | C |
|---------|------|------|------|
| 30 | 11.2 | 16.3 | 11.2 |
| 40 | 15.2 | 20.3 | 15.2 |
| 50 | 19.2 | 24.3 | 19.2 |
| 60 | 23.2 | 28.3 | 23.2 |
| 70 | 27.2 | 32.3 | 27.2 |
| 80 | 31.2 | 36.3 | 31.2 |
| 90 | 35.2 | 40.3 | 35.2 |
| 100 | 39.2 | 44.3 | 39.2 |
| 110 | 43.2 | 47.3 | 43.2 |
| 120 | 47.2 | 51.3 | 47.2 |

| NO. | PART NAME | MATERIAL | FINISH | Q'TC |
|-----|-----------------------------|--------------|---|------|
| 4 | PLUG HOUSING COVER 30P H5.8 | Polyamide | UL94-V0, BLACK | 1 |
| 3 | METAL-FITTING & LOCK | Copper Alloy | Ni1.27~3um+Sn2-5um MAX | 2 |
| 2 | PLUG TERMINAL | Copper Alloy | Ni1.27~3um+Au 0.1um MAX(Contact) & Au0.03um MIN(Lead) | 30 |
| 1 | PLUG HOUSING 30P H5.8 | Polyamide | UL94-V0, BLACK | 1 |

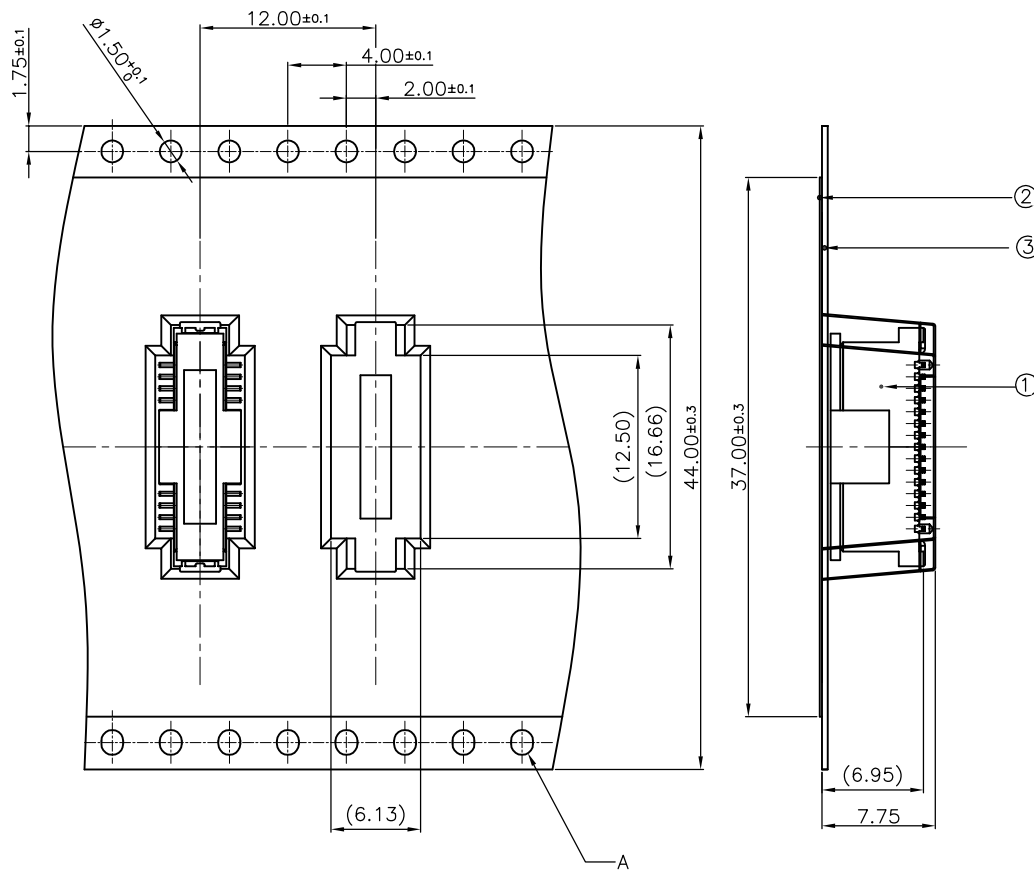
| LTR | REVISION RECORD | DR | CHK | APP | DATE | TOLERANCE EXCEPT AS NOTED | SCALE | PART NO. |
|-----|-----------------|---------|-----|-------|-----------|---------------------------|-------|----------------------------|
| | | Um.Y.H' | | | 10.02.04 | | 1/1 | MG655179 |
| | | | | B.W.C | 10'.02.04 | | | B TO B PLUG 30P H5.8 ASS'Y |

DESIGN REVISION NO. 1



| | |
|--------|------------|
| DIE NO | ISSUE MARK |
| | |

(DIMENSIONS IN MM)



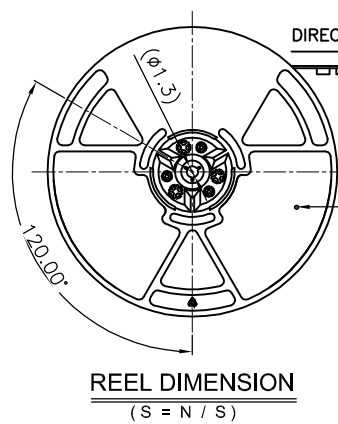
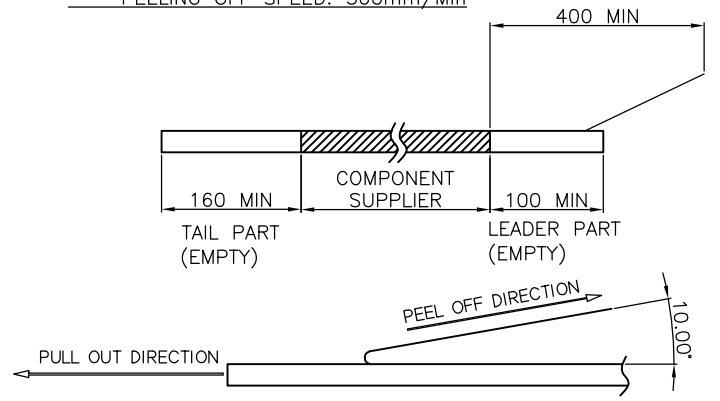
- NOTE -

1.NUMBER OF CONNECTOR:1000PCS/REEL

2.LEAD TAPE LENGTH(mm)

3.PEELING OFF FORCE OF TOP TAPE: 0.1N - 0.7N(10.2 - 71.4gf)

PEELING OFF SPEED: 300mm/Min



REEL DIMENSION (S = N / S)



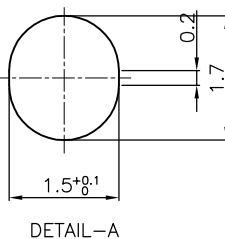
| | |
|---------|------------|
| TOOL NO | ISSUE MARK |
| 300011 | |

| NO. | NAME | MATERIAL | FINISH | PART NO. | Q'TC |
|-----|---------------------|----------|--------------|----------|------|
| 4 | REEL | PS | BLACK & BLUE | - | 1 |
| 3 | COVER TAPE | PET | - | - | - |
| 2 | CARRIER TAPE | PET 0.4t | - | - | - |
| 1 | 30P PLUG H5.8 ASS'Y | - | - | MG655179 | 1000 |

| LTR | REVISION RECORD | DR | CHK | APP | DATE | TOLERANCE EXCEPT AS NOTED | SCALE | PART NO. |
|-----|-----------------|---------|-----|-------|-----------|---------------------------|-------|-------------------------------------|
| | | Um.Y.H' | | | 10.02.04 | ±0.3 | 1/1 | P300011 |
| | | | | B.W.C | 10'.02.04 | | | B TO B PLUG 30P H5.8 TAPING PRODUCT |

DESIGN REVISION NO. 1

(DIMENSIONS IN MM)



DETAIL-A