

- NOTE -
 1. TOLERANCE: ±0.2, ANGLE ±3°
 2. CONPLANARITY: 0.1 MAX
 3. PART CODE

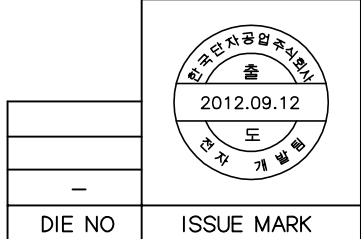
MG 6 5 5 3 3 8

4. "6 hazardous substances in parts (Lead, Mercury, Cadmium, Hexavalent Chromium, PBBs, PBDEs) shall not exceed the maximum permissible concentration prescribed under EU ELV Directive & RoHS Regulation."
 5. No Twist
 6. Spec : ES91500-03
 7. Solder : Reflow Solder Only(Surface mount)

PIN NO.	A	B	C
30	11.2	16.3	11.2
40	15.2	20.3	15.2
50	19.2	24.3	19.2
60	23.2	28.3	23.2
70	27.2	32.3	27.2
80	31.2	36.3	31.2
90	35.2	40.3	35.2
100	39.2	44.3	39.2
110	43.2	47.3	43.2
120	47.2	51.3	47.2

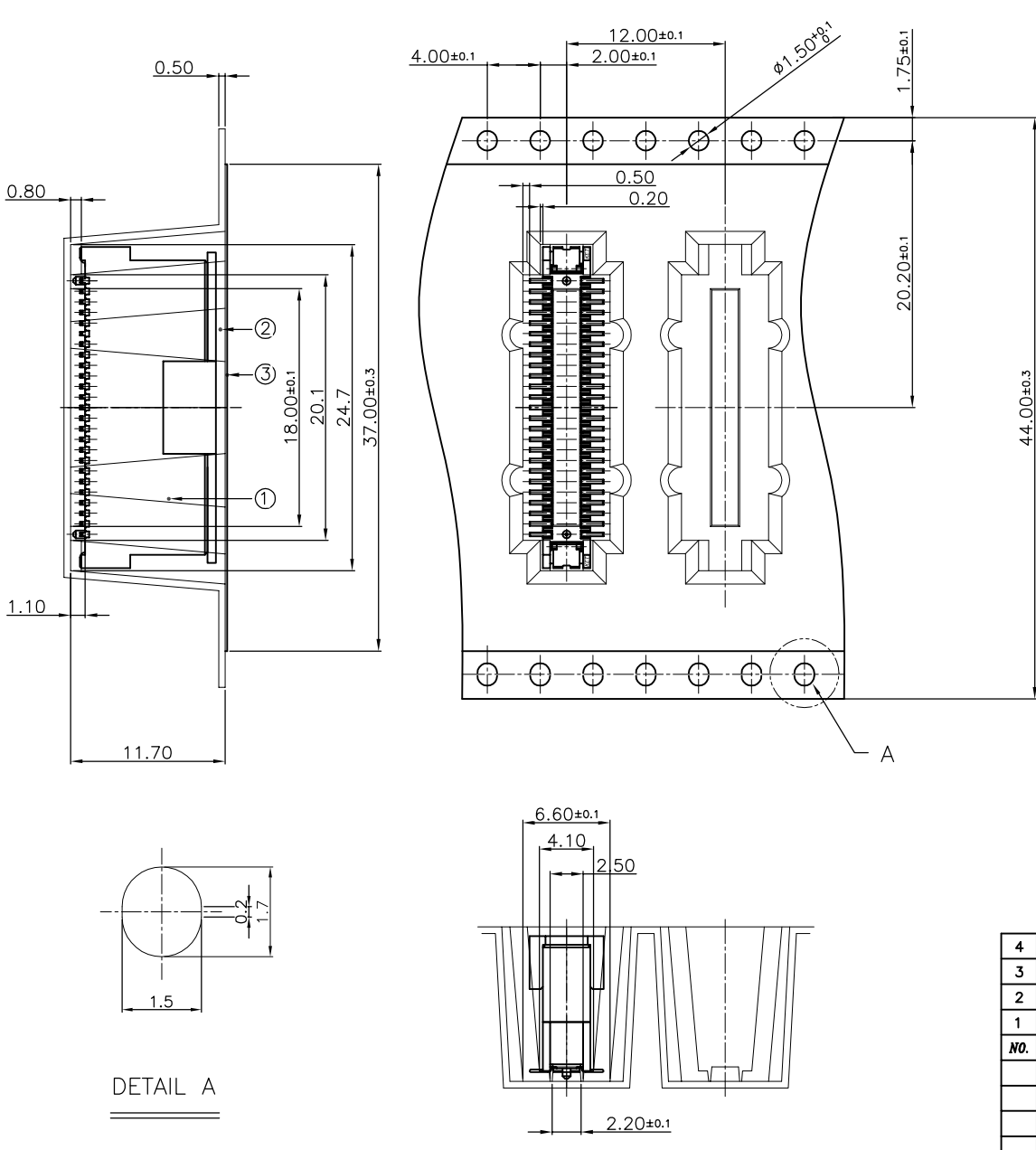
NO.	NAME	MATERIAL	FINISH	Q'TC
4	PLUG HS'G COVER 50P	Polyamide	UL94-V0, BLACK	1
3	METAL-FITTING	Copper Alloy	Ni1.27~3um+Sn2~5um MAX	2
2	PLUG TM'L 50P H9.65	Copper Alloy	Ni1.27~3um+Au 0.1um MAX(Contact) & Au0.03um MIN(Lead)	50
1	PLUG HS'G 50P H9.65	Polyamide	UL94-V0, BLACK	1

MATERIAL	-	KET KOREA ELECTRIC (ENGINEERED) TERMINAL CO., LTD.						
FINISH	-							
WIRE RANGE	-							
INSULATION	-							
LTR	REVISION RECORD	DR	CHK	APP	DATE	TOLERANCE EXCEPT AS NOTED	SCALE	PART NO.
	DR. Kim.J.M 10.09.01		CHK. Um.Y.H 10.09.01		10.09.01	-	1/1	MG655338
CHK.	APP. B.W.C 10.09.01	PART NAME			B TO B PLUG 50P H9.65 ASS'Y			

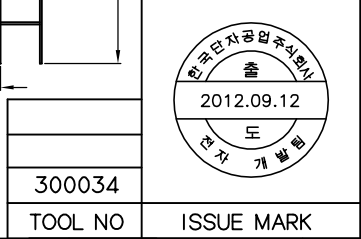
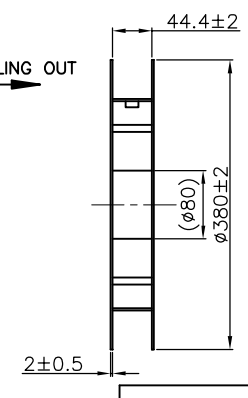
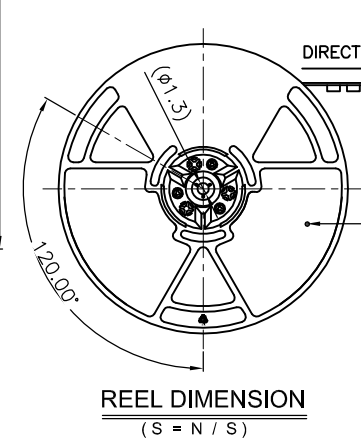
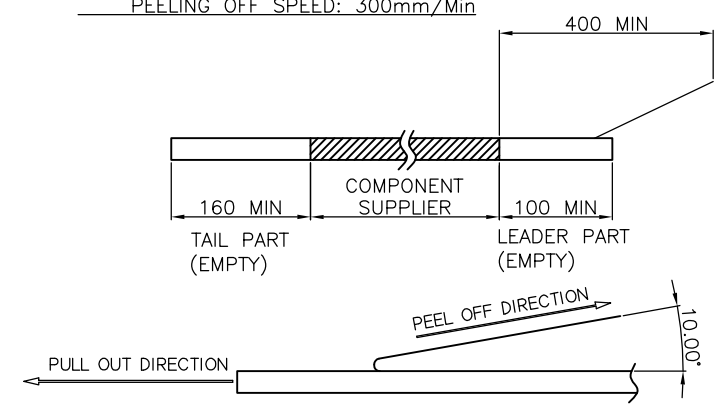


(DIMENSIONS IN MM)

DESIGN REVISION NO. 1



- NOTE -
 1. NUMBER OF CONNECTOR: 600PCS/REEL
 2. LEAD TAPE LENGTH(mm)
 3. PEELING OFF FORCE OF TOP TAPE: 0.1N - 0.7N(10.2 - 71.4gf)
 PEELING OFF SPEED: 300mm/Min



NO.	NAME	MATERIAL	FINISH	PART NO.	Q'TC
4	REEL	PS	BLACK & BLUE	-	1
3	COVER TAPE	PET	-	-	-
2	CARRIER TAPE	PET 0.4t	-	-	-
1	PLUG H9.65 ASS'Y	-	-	MG655338	600

MATERIAL	-	KET KOREA ELECTRIC (ENGINEERED) TERMINAL CO., LTD.						
FINISH	-							
WIRE RANGE	-							
INSULATION	-							
LTR	REVISION RECORD	DR	CHK	APP	DATE	TOLERANCE EXCEPT AS NOTED	SCALE	PART NO.
	DR. Kim.J.M 10.09.01		CHK. Um.Y.H 10.09.01		10.09.01	-	Non	P300034
CHK.	APP. B.W.C 10.09.01	PART NAME			B TO B PLUG 50P H9.65 TAPING PRODUCT			

(DIMENSIONS IN MM)

DESIGN REVISION NO. 0