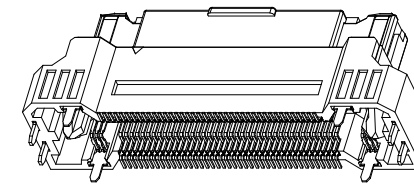
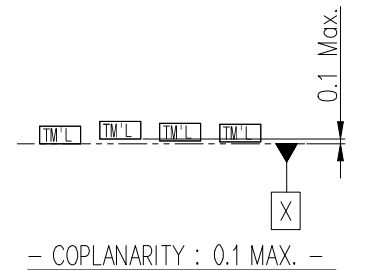


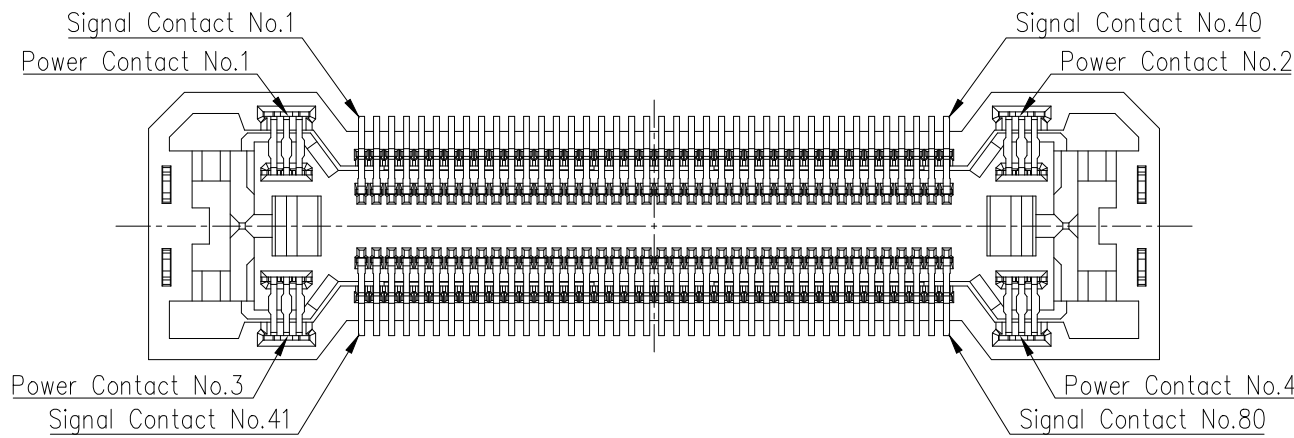
- NOTE -

1. TOLERANCE : $\pm 0.0B10.2$, ANGLE $\pm 0.0B13^\circ$
2. COPLANARITY : 0.1 MAX.
3. MATING PARTS : MG 646084-5
4. Spec : ES91500-03
5. Solder : Reflow Solder Only(Surface mount)



ISOMETRIC VIEW

DIE NO.	
	APPROVED
	2020-12-09
	KOREA ELECTRIC TERMINAL CO., LTD.



10 hazardous substances in parts (Lead, Mercury, Cadmium, Hexavalent Chromium, PBBs, PBDEs, DEHP, DBP, BBP, DIBP) shall not exceed the maximum permissible concentration prescribed under EU ELV Directive & RoHS Regulation."

5	PLUG 80P COVER	Polyamide	UL94-V0, BLACK	1
4	METAL FITTING	Copper Alloy	Ni + Sn	2
3	PLUG POWER TM'L H12.8	Copper Alloy	Ni + Au(Contact) + Sn(Lead)	4
2	PLUG SIGNAL TM'L H12.8	Copper Alloy	Ni + Au(Contact, Lead)	80
1	PLUG 80P HS'G H12.8	Polyamide	UL94-V0, BLACK	1
NO.	NAME	MATERIAL	FINISH	Q'TC
			MATERIAL	KET KOREA ELECTRIC ENGINEERED TERMINAL CO., LTD.
			FINISH	
			WIRE RANGE \parallel	CLASS Board to Board
			INSULATION \parallel	TYPE FLOATING P=0.5mm
\triangle	RELEASE	kuh pjm khc 19.02.21	TOLERANCE EXCEPT AS NOTED ± 0.2	SCALE 4:1
LTR	REVISION RECORD	DR. CHK. APP. DATE	PART NO. MG656915-5	
	DR. K.U.H 19.02.21	CHK. P.J.M 19.02.21	PART NAME 0.5 FLOATING B TO B PLUG 80P ASS'Y H12.8	1/1
	CHK.	APP. K.H.C 19.02.21		