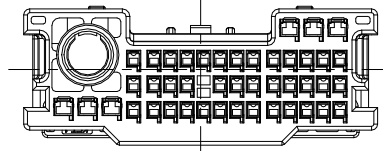
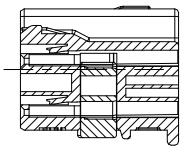
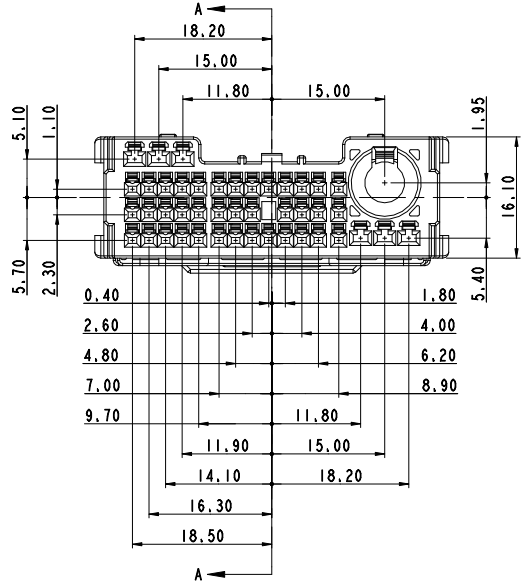
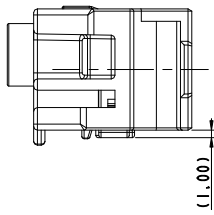


GENERAL TOLERANCE (HOUSING)										USED ON
10 MAX	30 MAX	50 MAX	70 MAX	100 MAX	120 MAX	250 MAX	250 VR	ANGLE	ECCENT	
±0.15	±0.2	±0.3	±0.4	±0.5	±0.75	±0.9	±1.4	±30'	0.1	

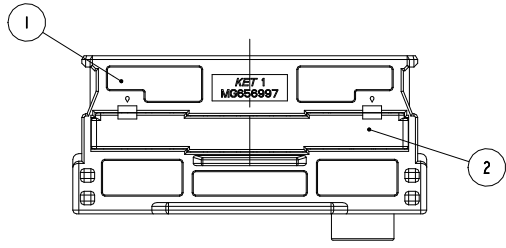
- 주 기
- 기능상 유해한 BURR 및 WELDLINE 등이 없을 것.
 - 적용 TERMINAL(C025) : ST731409-7, ST731410-7
적용 TERMINAL(C060) : ST731411-7, ST731412-7, ST731413-7
적용 TERMINAL(FAKRA) : KR20202-20, KR20301-20, KR00404-20
적용 CONNECTOR : MG646176
 - () 치수는 참고치수임.
 - 제품내 함유된 6대 유해물질 (납,수은,카드뮴,6가크롬, PBBs,PBDEs)은 EU ELV 지침 및 RoHS 법규에 제정된 최대 허용 농도를 초과해서는 안된다.

- NOTE
- MUST BE FREE OF BURR, WELDLINE AND IMPERFECTION THAT AFFECT FUNCTION.
 - APPLICABLE TERMINAL(C025) : ST731409-7, ST731410-7
APPLICABLE TERMINAL(C060) : ST731411-7, ST731412-7, ST731413-7
APPLICABLE TERMINAL(FAKRA) : KR20202-20, KR20301-20, KR00404-20
APPLICABLE CONNECTOR : MG646176
 - () REFERENCE DIMENSION.
 - 6 HAZARDOUS SUBSTANCES IN PARTS (LEAD, MERCURY, CADMIUM, HEXAVALENT CHROMIUM, PBBs, PBDEs) SHALL NOT EXCEED THE MAXIMUM PERMISSIBLE CONCENTRATION PRESCRIBED UNDER EU ELV DIRECTIVE & RoHS REGULATION.



NO.	MATERIAL	COLOR
* 0	P B T	NATURAL
1		RED
11		ORANGE
2		BLUE
22		JADE
3		YELLOW
4		GRAY
41		LIGHT GRAY
42		DARK GRAY
5		BLACK
61	LIGHT GREEN	
62	DARK GREEN	
7	BROWN	
9	MAGENTA	

NO	PART NO.	PART NAME	MATERIAL	FINISH	Q'TY
1	MG677105	025060FAKRA 45F HOUSING	SEE TABLE	SEE TABLE	1
2	MG677106-3	025060FAKRA 45F SPACER	PBT	YELLOW	1



		MATERIAL	SEE TABLE	KET KOREA ELECTRIC TERMINAL CO., LTD.				
		FINISH	SEE TABLE					
		WIRE RANGE	-					
		INSULATION	-	CLASS 025/060/FAKRA				
		TYPE	HYBRID					
LTR	REVISION RECORD	DR.	CHK.	APP.	DATE	SCALE	PART NO.	
DR.	LJJ 2018.02.23	CHK.				2/1	MG656997	
CHK.	AJH 2018.02.23	APP.	CMS		2018.02.23		PART NAME	
								025060FAKRA 45F ASSY