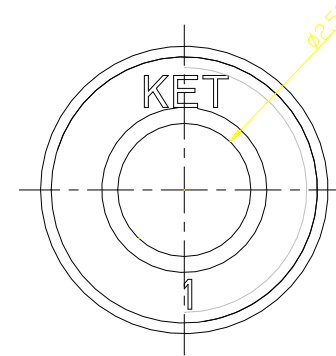
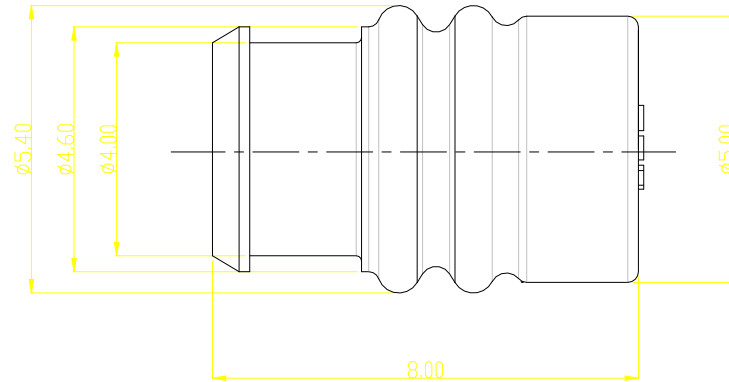
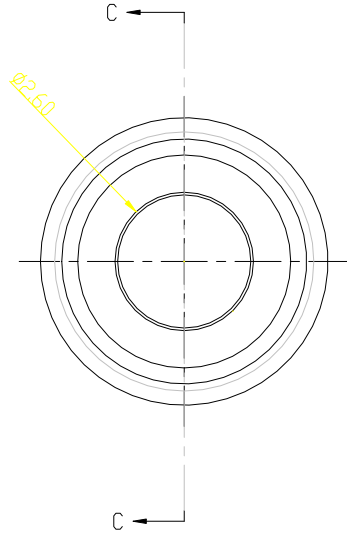


## 주 기

1. 지시하지 않은 반경 R은 0.3로 한다.
2. 지시하지 않은 모따기 C는 0.3으로 한다.
3. 기능상 유해한 BURR 및 WELDLINE 등이 없을 것
4. 적용 HOUSING : MG615581, MG625442, MG655771
5. 제품내 함유된 6대 유해물질 (납, 수은, 카드뮴, 6가크롬, PBBs, PBDEs)은 EU ELV 지침 및 RoHS 법규에서 지정한 최대 허용 농도를 초과해서는 안된다.

## NOTE

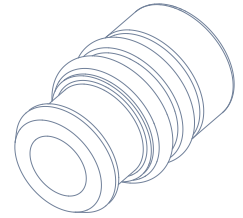
1. UNLESS OTHERWISE SPECIFIED ALL RADIUS TO BE 0.3 RADIUS.
2. UNLESS OTHERWISE SPECIFIED ALL CHAMFERS TO BE 0.3 CHAMFER.
3. MUST BE FREE OF BURR, WELDLINE AND IMPERFECTION THAT AFFECT FUNCTION.
4. APPLICABLE HOUSING : MG615581, MG625442, MG655771
5. 6 HAZARDOUS SUBSTANCES IN PARTS (LEAD, MERCURY, CADMIUM, HEXAVALENT CHROMIUM, PBBs, PBDEs) SHALL NOT EXCEED THE MAXIMUM PERMISSIBLE CONCENTRATION PRESCRIBED UNDER EU ELV DIRECTIVE & RoHS REGULATION.



## GENERAL TOLERANCE (SILICONE RUBBER)

	0 TO 3	3 TO 6	6 TO 10	10 TO 18	18 TO 30	30 TO 50	50 TO 80
B	±0.3	±0.4	±0.5	±0.6	±0.8	±1.0	±1.2

USED ON



ISO VIEW

APPROVED

2015-06-25

KOREA ELECTRIC  
TERMINAL CO., LTD.  
Electronic Product Development Team

ISSUE MARK

					MATERIAL	SILICONE	<b>KET</b> [ENGINEERED] KOREA ELECTRIC TERMINAL CO., LTD.
					FINISH	DARK RED	
					WIRE RANGE	1015#18-16	
					INSULATION	-	
LTR	REVISION RECORD	DR.	CHK.	APP.	DATE	SCALE	PART NO.
	DR. KSH 2013.10.25.					10/1	
CHK.		APP. BACK 2013.10.25.				PART_NAME	070(WP) 6P WIRE-SEAL (M)