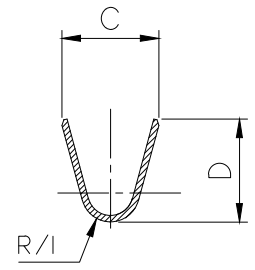
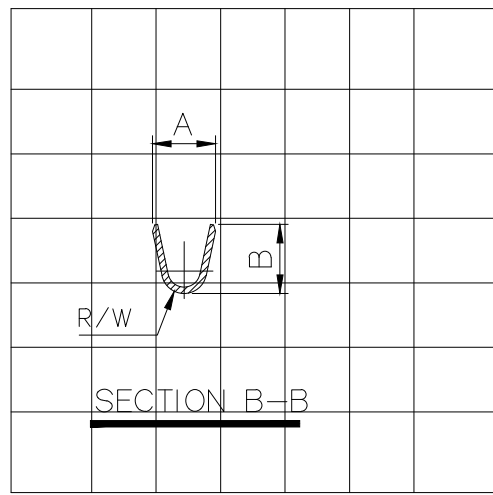
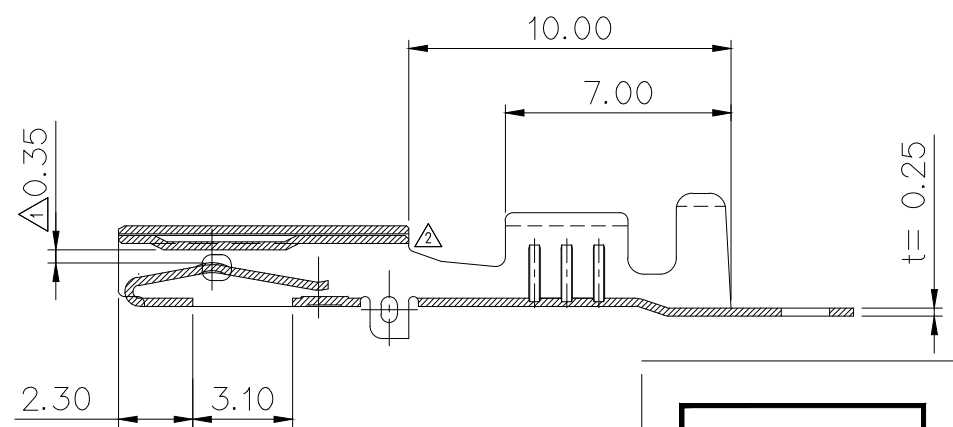
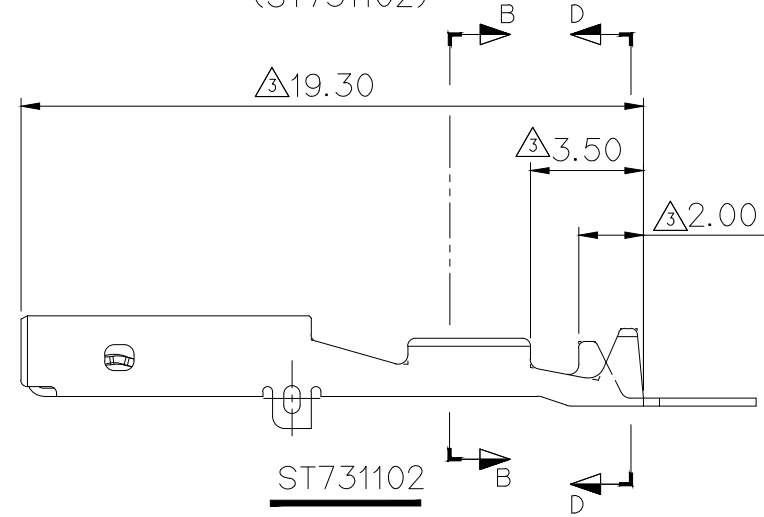
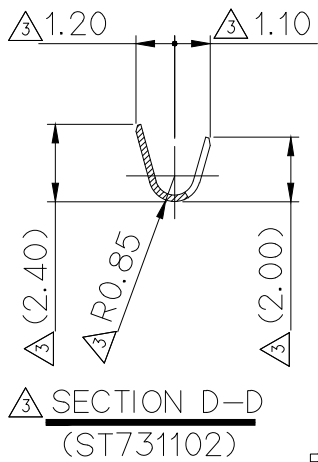
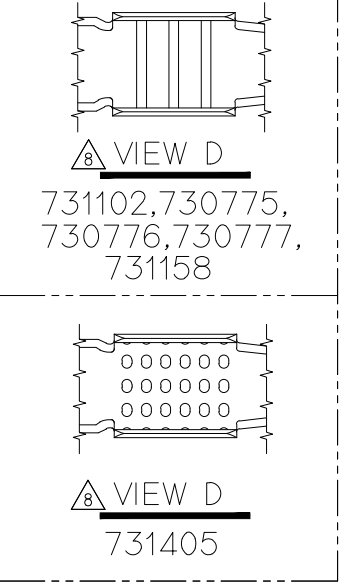
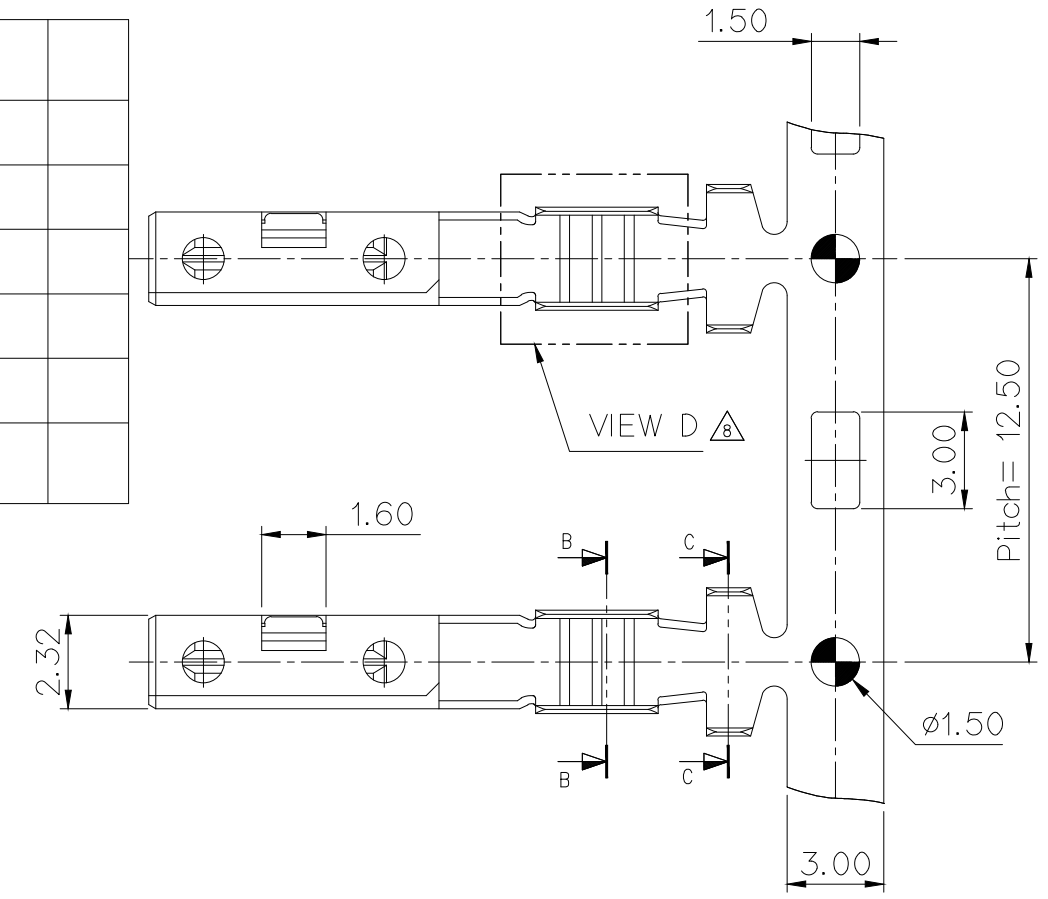
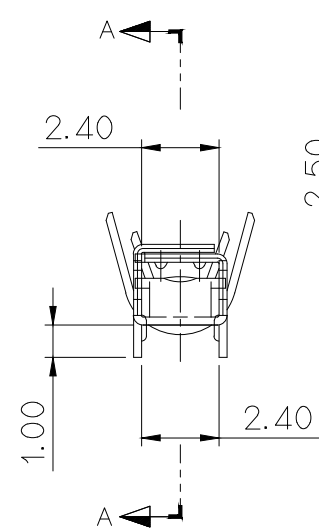


PART NO. SEE TABLE

CUSTOMER DRAWING



SECTION C-C



SECTION A-A

GENERAL TOLERANCE (TERMINAL)						USED ON
10MAX	50MAX	100MAX	250MAX	ANGLE	ECCENT	
±0.15	±0.20	±0.30	±0.50	±30'	0.10	

NOTE

- 1. TERMINAL INSERTION FORCE, RETENSION FORCE
INSERTION, RETENSION FORCE : 0.50Kgf (INITIAL)
RETENSION FORCE : Min 0.25Kg (After 10 TIMES TRIALS)
- 2. APPLICABLE TERMINAL : ST740672, -0673, -0674, -1101, -1424
- 3. 6 HAZARDOUS SUBSTANCES IN PARTS (LEAD, MERCURY, CADMIUM, HEXAVALENT CHROMIUM, PBBs, PBDEs) SHOULD NOT EXCEED THE MAXIMUM PERMISSIBLE CONCENTRATION PRESCRIBED UNDER EU ELV DIRECTIVE & RoHS REGULATION.

주 기

- 1. TERMINAL 삽.발거력: IN,OUT 초기: 0.50kgf이하
OUT(10회): 0.25kgf이상
- 2. 적용 MALE TERMINAL: ST740672, -673, -674, ST741101, -1424
- 3. 제품내 함유된 6대 유해물질 (납,수은,카드뮴,6가크롬, PBBs,PBDEs)은 EU ELV 지침 및 RoHS 법규에서 지정한 최대 허용 농도를 초과해서는 안된다.

PART NO.	BARREL WIRE RANGE (mm ²)	WIRE BARREL			INSULATION BARREL			FINISH
		A	B	R/W	C	D	R/I	
3 ST731102-3(SS)	CHFUS 0.13~0.22 AVSS 0.22 9 FLCUMGO2RY 0.13 9 FLY-A 0.13~0.22	1.9	1.8	0.6	-	-	-	Pre-Tin
ST730775-3(S) 8 ST730775-G(S)	AVSS 0.3~0.5 4 CIVUS 0.35~0.5 9 FLY-A,B 0.35~0.5	2.4	2.3	0.75	3.6	3.3	1.5	Pre-Tin GOLD
5 ST731405-3(M)	FLALUY 1.25				6 3.6	6 3.3	6 1.5	Pre-Tin
ST730776-3(M)	AVSS 0.85~1.25 6 9 CIVUS 0.35+0.35, 0.75~1.0 9 FLY-B 0.75~1.5 9 AVSSXF 1.0	3.2	2.9	1.0	4.6	3.8	1.75	Pre-Tin
ST730777-3(L)	AVSS 2.0 9 FLY-B 2.0 9 AVSSXF 1.5	4.3	4.1	1.3	4.6	3.9	1.8	Pre-Tin
1 ST731158-3(XL)	AVSSXF 2.5 9 FLY-B 2.0~2.5	4.3	4.1	1.3	4.6	4.2	1.8	Pre-Tin

9	ECO-2012-141 근거 도면 수정 세경화 및 ISO 전선 사양 추가	SSW	HJE	CKY	20.12.16
8	ECO-1909-108 근거 도면 수정 알루미늄 세레이션 형상 CU도면 추가	JKH	HJE	CKY	19.11.27
7	ECO-1811-329 근거 도면 제작성	LJH	HJE	LSY	18.11.21
6	ECO-1806-369 근거 도면 제작성 (CIVUS 0.35+0.35 사양 추가 및 1/Barrel 수정)	LSY		SUK	18.06.26
5	ECO-1806-273 근거 도면 제작성		HJE	SUK	18.06.11
4	ECO-1609-052 근거 도면 제작성	KSC	CJH	LSY	16.09.22
3	설계사양 변경(S080050) 근거 사양 추가	YSW	HSH	KKJ	08.04.04
2	사양 변경(S050263)에 따른 형상 변경	YSW	HSH	KKJ	2005.11.14
1	GAP 규격 및 TENTION 규격 변경	SWS	KKJ	CSH	2002.8.08
LTR	REVISION RECORD	DR.	CHK.	APP.	DATE
DR.	WON. 2000.6.24	CHK.	KKJ		6.24
CHK.		APP.	CSH		6.24

MATERIAL	Copper Alloy	 KOREA ELECTRIC TERMINAL CO., LTD.	
FINISH	SEE TABLE		
WIRE RANGE	SEE TABLE		
INSULATION	SEE TABLE		
TOLERANCE EXCEPT AS NOTED	SEE TABLE	SCALE	4/1
PART NAME	ASC FEMALE TERMINAL		

APPROVED

2021-11-03

KOREA ELECTRIC
TERMINAL CO., LTD.
Korea Electric Terminal Co., LTD.

ISSUE MARK

DIMENSIONS IN (MM)